



ALDECO

Veva II

A new light

Veva II

A new light

WWW.ALDECO.PT



In this collection, Aldeco explores the most daring facet of Veva de Lima's life, now revealing itself with renewed intensity. Veva, a lady of liberty, was a fascinating and eccentric figure, a singular, bold woman far ahead of her time.

Aldeco revisits Veva under the echoes of her imagination to project herself in a new light. Maintaining the audacity that always distinguished her, Veva II deepens the dialogue between the human universe and the animal world, combining strength, eccentricity, and sophistication, exploring eclectic shapes, symbols, and gestures that evoke the instinctive freedom and wild fantasy that marked the several phases of her life.

This new approach is an expanded point of

view, a visionary continuation that adds depth and a touch of irreverence. A fusion between a woman's life, her animal self, and the fantasy inspired by the surrealist imagery that Veva cultivated, creating an exuberant, mysterious, and powerful universe.

Here, eccentricity does not appear as a rupture, but as a natural evolution: a territory where it transforms into aesthetic language, and where we reaffirm, with surprising freshness, the playful and inventive force of VEVA.



Lady of Liberty

A fascinating and eccentric figure, a unique woman, daring and far ahead of her time. She combines strength, eccentricity and sophistication. A fusion between a woman's life and her animal spirit.

Susana Dias

Brand & Creative Director
Susana Dias

En esta colección, Aldeco explora la faceta más audaz de la vida de Veva de Lima, ahora revelada con renovada intensidad. Veva, una mujer libre, fue una figura fascinante y excéntrica, una mujer singular, muy adelantada a su tiempo.

Aldeco reinterpreta a Veva bajo los ecos de su imaginación para proyectarse bajo una nueva luz. Manteniendo la audacia que siempre la distinguió, Veva II profundiza en el diálogo entre el universo humano y el mundo animal, combinando fuerza, excentricidad y sofisticación, explorando formas, símbolos y gestos eclécticos que evocan la libertad instintiva y la fantasía salvaje que marcaron las distintas etapas de su vida.

Este nuevo enfoque es un punto de vista

VevadeLima Mayerlrich

Dans cette collection, Aldeco explore la facette la plus audacieuse de la vie de Veva de Lima, révélée avec une intensité renouvelée. Femme de liberté, Veva était une figure fascinante et excentrique, une femme singulière en avance sur son temps.

Aldeco revisite Veva à travers les échos de son imagination pour la projeter sous une lumière inédite. Conservant l'audace qui l'a toujours caractérisée, Veva II approfondit le dialogue entre l'univers humain et le monde animal, alliant force, excentricité et sophistication, et explorant des formes, des symboles et des gestes éclectiques qui évoquent la liberté instinctive et la fantaisie débridée qui ont marqué les différentes phases de sa vie.

Cette nouvelle approche offre un point de vue

expandido, una continuación visionaria que añade profundidad, audacia y un toque de irreverencia. Una fusión entre la vida de una mujer, su yo animal y la fantasía inspirada en la imagería surrealista que Veva cultivó, creando un universo exuberante, misterioso y poderoso.

Aquí, la excentricidad no aparece como una ruptura, sino como una evolución natural: un territorio donde lo imaginario se transforma en lenguaje estético, y donde reafirmamos, con sorprendente frescura, la fuerza lúdica e inventiva de VEVA.

élargi, une suite visionnaire qui ajoute profondeur, audace et une pointe d'irrévérence. Une fusion entre la vie d'une femme, sa nature animale et le fantastique inspiré par l'imagerie surréaliste cultivée par Veva, créant un univers exubérant, mystérieux et puissant.

Ici, l'excentricité n'apparaît pas comme une rupture, mais comme une évolution naturelle : un territoire où l'imaginaire se transforme en langage esthétique, et où nous réaffirmons, avec une fraîcheur surprenante, la force ludique et inventive de VEVA.



[1]
LA FOLIE
Canvas Non Woven 160 gr/m2

Nesta coleção a Aldeco explora a faceta mais ousada da vida de Veva de Lima, revelando-se agora com uma intensidade renovada. Veva, dama de liberdade, foi uma figura fascinante e excêntrica, mulher singular e muito à frente do seu tempo.

A Aldeco revisita Veva sob os ecos da sua imaginação para se projetar sob uma luz inédita. Mantendo a ousadia que sempre a distinguiu, Veva II aprofunda o diálogo entre o universo humano e o mundo animal, combina força, excentricidade e sofisticação, explorando formas ecléticas, símbolos e gestos que evocam a liberdade instintiva e a fantasia selvagem que marcaram as várias fases da sua vida.

Esta nova abordagem é um ponto de vista expandido, uma continuação visionária que

acrescenta profundidade, audácia e um toque de irreverência. Uma fusão entre a vida de uma mulher, o seu animal e a fantasia inspirada no imaginário surrealista que Veva cultivava, criando um universo exuberante misterioso e poderoso.

Aqui, a excentricidade não surge como ruptura, mas como evolução natural: um território onde o imaginário se transforma em linguagem estética, e onde reafirmamos, com uma frescura surpreendente, a força lúdica e inventiva de VEVA.





PARTICULIER FR

PARTICULIER FR is a sophisticated jacquard fabric intended for upholstery. This cotton and viscose jacquard has a pattern of delicate waves, like a succession of lines advancing and receding in a continuous rhythm. The subtle vibrations of the design create the sensation of a constantly moving surface, like the ripples on a riverbank, linking to the next in a precise and controlled gesture. The dynamic motif suggests the elegance of a texture sculpted by time, emphasizing subtlety, depth, and refinement. This faux plain fabric has several fire-retardant certifications and is available in 10 colours that easily coordinate with the collection.





[1]
SAUVAGE VELVET
Col. 05 Cognac sur Noir

[2]
POETIQUE
Col. 05 Or sur Noir

[3]
PARTICULIER FR
Col. 06 Cognac

POETIQUE

POETIQUE is an exquisitely embroidered cotton satin fabric for upholstery. This fabric reveals a clear oriental influence, reminiscent of open fans or stylized petals drawn with the precision of a calligraphic gesture, so dear to Veva de Lima. The lines repeat across the cotton ground, forming subtly hypnotic arches, creating a serene movement that evokes rituals of contemplation and the harmony of Eastern decorative arts. The pattern, simultaneously geometric and poetic, is abstract and stands out for the delicacy of its refined visual language. Each curve unfolds elegantly in stripes full of tradition and ancestry. Discover this visual poem available in 5 timeless colours.

SAUVAGE VELVET

SAUVAGE VELVET is a jacquard velvet for upholstery with an animal-inspired design. This exquisite pattern creates a striped effect using the ombré technique. Ombré velvet is a fabric that features a smooth and gradual transition between two colours, creating a “gradient” effect. The word ombré is French and means “shaded.” This effect is achieved through a complex weaving technique that gives it a gradient appearance, making the fabric visually rich and luxurious. This jacquard velvet has a particularly soft, velvety, and luxurious feel. The gradient effect adds an extra layer of depth and visual impact. Sauvage Velvet combines strength, eccentricity, and sophistication, a fusion between a woman’s life, her pet, and the fantasy inspired by the surrealist imagery that Veva cultivated. Creating a space of leopard and shadows, a dramatic and wild space inspired by Veva’s pet. This velvet represents an exuberant, mysterious, and powerful universe and is available in 5 shades, with 2 being lighter and more delicate and 3 more contrasting and enigmatic.



TOTO

TOTO is an extremely durable chenille fabric for upholstery. This soft as velvet fabric serves as the ground for the FELINE embroidery. TOTO has a delicate texture with a very pleasant hand feel.

The name TOTO pays homage to the leopard of the same name that Veva cherished as a pet and that she used to roam the streets of Lisbon. This elegant chenille is available in the 3 ground colours of the Feline embroidery to achieve the complete look.



FELINE

FELINE is a lovely chenille with an abstract embroidery that evokes an animal print. In this upholstery fabric, the wild irreverence reproduces movement, rhythm, and technical subtlety. The soft, velvety ground, named TOTO, features dynamic elongated embroidered shapes. The abstract figures evoke fleeting feline silhouettes or tails waving in the wind, alternating between zigzag fill and linear strokes in a warm tone. This interplay between full and empty, with different textures, creates the sensation that the pattern is constantly moving across the ground. The contrasting zigzag blends fluidly with the earthy-toned outline. Feline represents luxury and boldness, transforming any space into a setting where elegance moves silently. It is available in 3 natural tones.



[1]
TOTO
Col. 03 Gris Bleute

[2]
FELINE
Col. 03 Gris Bleute



CHOUCHOU

CHOUCHOU is a jacquard upholstery fabric with a geometric design composed of contiguous shapes, where each curved line seems like a gesture interrupted midway, as if the design was breathing at its own rhythm. The base has an effect like a Panama weave with a micro-reticulated where smooth arches rise, repeated with enormous visual precision. The pattern, formed by mirrored half-moons that intertwine like links in a serene chain, creates an undulating and organic movement. It is a special fabric that conveys harmony, continuity, and elegance, as if each curve invited the eye to follow a tranquil and endless path. This fabric is available in a palette of 7 varied colours, which gives it depth and texture.



[1]
CHOUCHOU
Col. 07 Black

[2]
LA SCENE
Col. 01 Natural White



[1]
CHOUCHOU
Col. 01 Linen



[2]
LINOR
Col. 01 Natural White

FAROUCHE

FAROUCHE is a jacquard fabric, on the CLAUS ground, with an intricate animal-inspired embroidery. Its thick thread embroidered stitches simultaneously contrast and radiate from the undulating line that forms elegant vertical stripes on the fabric. This abstract pattern forms irregular horizontal lines reminiscent of an animal print. This irreverent and bold fabric is extremely versatile, suitable for use in decoration, light upholstery, and drapery. It is available in 3 very natural colours.

LINOR

LINOR is a wide (300 cm), heavy curtain fabric with transparency. This natural looking fabric has a slightly textured ground, similar to linen. It features elegant and regular embroidered vertical stripes, in a tone similar to the ground or slightly more contrasting, creating a discreet and structured pattern. The embroidery is subtle, adding visual rhythm and originality to the fabric. This sheer conveys lightness, neutrality, and sobriety, allowing good light transmission and being suitable for minimalist or contemporary spaces. Linor is available in 2 shades.

[1]
FAROUCHE
Col. 01 Noir sur Blanc

[2]
LINOR
Col. 01 Natural White



CHARADE

CHARADE is a jacquard upholstery fabric with a rich, complex pattern. This jacquard features a structured geometric design, composed of angular shapes that fit together in a precise interplay of lines and rhythms. The design creates a sense of depth and relief, like carefully thought-out textile architecture, where each segment reinforces the balance of the whole. Repetition creates dynamism without excess, giving the fabric a strong graphic presence, simultaneously sophisticated and timeless, where geometric order transforms into refined decorative expression. This highly durable fabric is available in 7 different colours to match the rest of the collection.

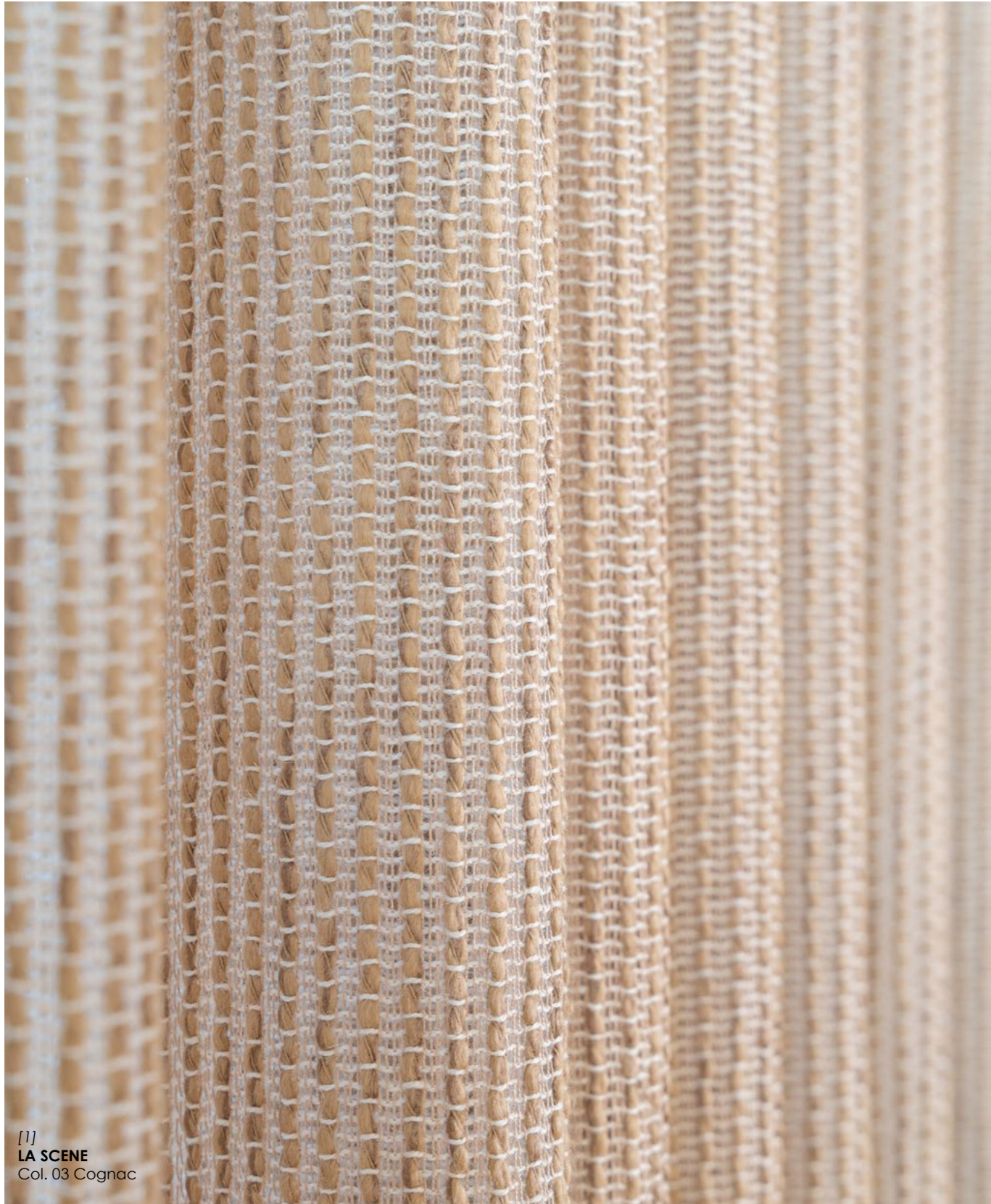
LA SCENE

LA SCENE is a wide curtain fabric measuring approximately 295/300 cm. This is a heavy, open-weave fabric with rich bouclé yarns, creating a soft and natural texture. The bouclé yarns are structured and arranged vertically, giving depth and character to space. It is a heavy fabric, but it allows good light transmission and is ideal for curtains thanks to its excellent drape. It ensures a comfortable and cosy space without completely blocking out the light. It is available in 3 very elegant natural colours.

[1]
CHARADE
Col. 05 Cognac Indigo

[2]
LA SCENE
Col. 03 Cognac





[1]
LA SCENE
Col. 03 Cognac



[2]
CHARADE
Col. 05 Cognac Indigo

PRIMITIF EASY CLEAN

PRIMITIF EASY CLEAN is a structured, easy-to-clean upholstery fabric.

This fabric comes in only one natural linen look colour and features a high martindale combined with easy-care features for an elegant texture and sophisticated aesthetic that remains consistent in your spaces.

BLASÉ

BLASÉ is an embroidered fabric on a neutral textured base called PRIMITIF. This fabric reveals itself with a look that is simultaneously handcrafted and sophisticated, where curved lines meet like ancestral paths marked on the ground fabric with delicately embroidered jute threads. The base tone is common to all 3 colour variations. The design repeats itself like a ritual, with each curve outlined in stitches and strokes that seem embroidered by patient artisans, inheriting gestures from generations. The composition creates a smooth rhythm, almost like the flow of winding rivers over a tranquil landscape. It is a fabric with a natural yet noble appearance — the ideal combination of the simplicity of the raw material and the sophistication of the detail of different types of embroidered threads. A fabric that expresses authenticity and refinement, as if it carried with it the warm memory of a traditional atelier. Let yourself be surprised by its 3 embroidery tones.

[1]
FAROUCHE
Col. 02 Corde Naturelle

[2]
BLASE
Col. 01 Ivoire Lin

[3]
PRIMITIF EASY CLEAN
Col. 01 Linen

[4]
LINOR
Col. 02 Greige





[1]
FAROUCHE
Col. 02 Corde Naturelle



[2]
BLASE
Col. 01 Ivoire Lin



[1]
SAUVAGE VELVET
Col. 01 Blanc Gris

[2]
SAUVAGE VELVET
Col. 02 Nude

[3]
POETIQUE
Col. 02 Brume de Lin

BIBLIOTHEQUE VELVET

BIBLIOTHEQUE VELVET is a jacquard velvet for upholstery with an abstract geometric motif. With BIBLIOTHEQUE, we pay homage to the importance that books, magazines, and theater played in Veva's life. This jacquard velvet is extremely sophisticated and technically complex.

The geometric shapes parade orderly like books with their spines aligned with varying colours in the fabric. This rich and luxurious look is achieved using the ombré technique, the contrast between full and empty achieved with the use of cut pile on a linen base, in addition to the use of a bulky chenille yarn which gives it added three-dimensionality. Ombré velvet is a fabric that features a smooth and gradual transition between two colours, creating a "degradé" effect. The word ombré means "shaded" in French. This effect is achieved through an intricate weaving technique that gives it a gradient appearance, making the fabric visually rich and luxurious. Let yourself be seduced by the 3 colour combinations in which BIBLIOTHEQUE is available.



[1]
BIBLIOTHEQUE VELVET
Col. 02 Olivier Doree

[2]
SIÈGE VELVET
Col. 0483 Golden Camel

[3]
BIBLIOTHEQUE VELVET
Col. 03 Brun Bleute

[4]
BIBLIOTHEQUE VELVET
Col. 01 Brume de Lin





[1]
SIÈGE VELVET
Col. 0483 Golden Camel



[2]
SIÈGE VELVET
Col. 5200 Magnetic Cobalt Blue

LIGNE DE VIE

LIGNE DE VIE is a richly embroidered jacquard with several types of stitches. Its ground structure with a herringbone pattern contrasts with the juxtaposed serpentine lines composed of different yarns, including jute. This embroidery aims to honor the fascinating life of Veva de Lima. Her life was marked by numerous events, from eccentric social and cultural gatherings to complex family dynamics and profound existential meditation. Ligne de Vie represents, through the joining of curvilinear elements, the highs and lows of Veva's life, on the CLAUS ground composed of cotton, linen, and viscose. We recommend its use for curtain, decoration, and light upholstery. Let yourself be dazzled by the 3 elegant shades of Ligne de Vie.

CLAUS

CLAUS is a jacquard fabric with a herringbone pattern. This upholstery fabric stands out from regular plain fabrics because, despite being available in solid colours, it creates rich zigzag nuances. Claus is a piece-dyed fabric composed of BCI cotton (Better Initiative Cotton), linen, and Ecovera viscose, making it an eco-friendly fabric. This fabric serves as the ground for two elegant embroideries in the Collection: Farouche and Ligne de Vie. It is available in 5 colours that perfectly match the other fabrics in the collection.

[1]
LIGNE DE VIE
Col. 03 Nuit Bleu





[1]
LIGNE DE VIE
Col. 01 Automne Nature



[2]
LIGNE DE VIE
Col. 03 Nuit Bleu



LIGNE DE VIE
Col. 03 Nutt Bleu



[2]
SAUVAGE VELVET
Col. 04 Or sur Azure

[3]
POETIQUE
Col. 04 Or sur Azure



[1]
SAUVAGE VELVET
Col. 04 Or sur Azure



[2]
POËTIQUE
Col. 04 Or sur Azure

FLAPPER STRIPE IN/OUTDOOR FR

FLAPPER IN/OUTDOOR FR is a jacquard fabric for indoor and outdoor upholstery use. Its striped pattern on a panama base creates a set of dynamic lines with subtle reliefs, giving the fabric an elegant and modern look. The interaction between the geometry of the stripes and the volume of the bouclé yarns results in a fabric with a distinctive presence, capable of transforming any space with sophistication.

FLAPPER is available in 5 different colours, is water-repellent, and extremely resistant to external elements such as sun, chlorine, mold, and sea water.

COLETTE IN/OUTDOOR

COLETTE IN/OUTDOOR is a jacquard upholstery fabric developed to offer resistance and durability in both indoor and outdoor spaces, while maintaining a refined aesthetic. Its pattern, combined with its sometimes vibrant colours, enhances the abstract design. This fabric reveals an organic and fluid pattern, composed of cut-out shapes that intertwine like a modernist painting. The smooth lines define irregular shapes, creating a balanced interplay between solids and voids that gives rhythm and movement to the surface. The design evokes a stylized nature, reinterpreted in a graphic and sophisticated way, with lightness and harmony. Colette presents a contemporary expressive motif that combines modernity and elegance in a clear and refined visual language. COLETTE is perfect for adding colour, style, and comfort to upholstery and cushions in any space of your project, available in 7 colour variations.



[1]
FLAPPER STRIPE IN/OUTDOOR FR
Col. 05 Marine Blue

[2]
COLETTE IN/OUTDOOR
Col. 07 Marine Blue





[1] CORALIE IN/OUTDOOR FR
Col. 02 Golden Rod

[2] FLAPPER STRIPE IN/OUTDOOR FR
Col. 02 Golden Rod

[3] COLETTE IN/OUTDOOR
Col. 02 Golden Rod

[4] COLETTE IN/OUTDOOR
Col. 05 Moss Green

[5] FLAPPER STRIPE IN/OUTDOOR FR
Col. 04 Moss Green

[6] CORALIE IN/OUTDOOR FR
Col. 04 Moss Green



[7] COLETTE IN/OUTDOOR
Col. 03 Terracotta

Veva II

A new light

BIBLIOTHEQUE VELVET L. 140 cm



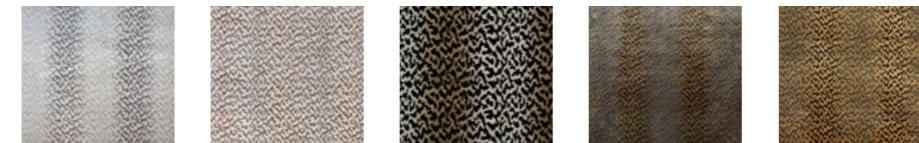
Col. 01
Brume de Lin
T193420001

Col. 02
Olivier Doree
T193420002

Col. 03
Brun Bleute
T193420003

COMPOSITION: 58% VI + 38% PL + 3% LI + 1% RCO | WEIGHT: 959 g/ml | MARTINDALE: 30.000 CC | RAPPORT: H35 x V15,4 cm | FR: BS5852 Source 1 + CRIB 5 Under Request.

SAUVAGE VELVET L. 140 cm



Col. 01
Blanc Gris
T193410001

Col. 02
Nude
T193410002

Col. 03
Nature sur Noir
T193410003

Col. 04
Or sur Azure
T193410004

Col. 05
Cognac sur Noir
T193410005

COMPOSITION: 71% VI + 21% PL + 8% RCO | WEIGHT: 977 g/ml | MARTINDALE: 30.000 CC | RAPPORT: H35 x V28,5 cm | FR: BS5852 Source 1 + CRIB 5 Under Request.

BLASE L. 146 (use 136 cm)



Col. 01
Ivoire Lin
T193450001

Col. 02
Cognac de Lin
T193450002

Col. 03
Bleu Fjord Lin
T193450003

COMPOSITION: 52% BCI CO + 48% PL (Embroidery: 35% PL + 20% JU + 40% VI + 5% PA) | WEIGHT: 1033 g/ml | LIGHTFASTNESS: 4 | MARTINDALE: 30.000 CC | RAPPORT: H69 x V58 cm | OEKO-TEX 100 | GOTS.

PRIMITIF EASY CLEAN L. 147 cm



Col. 01
Linen
T193460001

COMPOSITION: 52% BCI CO + 42% PL | WEIGHT: 709 g/ml | LIGHTFASTNESS: 4 | MARTINDALE: >100.000 CC | WATER REPELLENT | OEKO-TEX 100 | GOTS.

CHARADE L. 138 cm



Col. 01
Linen
T193430001

Col. 02
Greige
T193430002

Col. 03
Cognac
T193430003

Col. 04
Corail Cognac
T193430004

Col. 05
Cognac Indigo
T193430005

Col. 06
Fraiche Aqua
T193430006

Col. 07
Marine Blue
T193430008

COMPOSITION: 62% BCI CO + 29% PL + 5% LI + 4% VI | WEIGHT: 1020 g/ml | LIGHTFASTNESS: 4 | MARTINDALE: 70.000 CC | RAPPORT: H32 x V40 cm | FR: M1 + NFPA 701 + BS5867 PART 2 Under Request. | OEKO-TEX 100 | GOTS.

CHOUCHOU L. 137 cm



Col. 01 Linen T193350001
Col. 02 Taupe T193350002
Col. 03 Coral T193350003
Col. 04 Olive Green T193350004
Col. 05 Riverside Blue T193350005
Col. 06 Marine Blue T193350006
Col. 07 Black T193350007

COMPOSITION: 59% PL + 41% BCI CO | WEIGHT: 552 g/ml | LIGHTFASTNESS: 4 | MARTINDALE: 35.000 CC | RAPPORT: H10,7 x V4,6 cm | FR: M1 + NFPA 701 + BS5867 PART 2 Under Request. | OEKO-TEX 100 | GOTS.

FAROUCHE L. 140 (use 132 cm)



Col. 01 Noir sur Blanc T193390001
Col. 02 Corde Naturelle T193390002
Col. 03 Camel T193390003

COMPOSITION: 52% BCI CO + 39% VI + 9% LI (Embroidery: 70% PL + 15% JU + 10% VI + 5% PA) | WEIGHT: 882 g/ml | LIGHTFASTNESS: 4 | MARTINDALE: 30.000 CC | RAPPORT: H33 x V58 cm | OEKO-TEX 100 | GOTS.

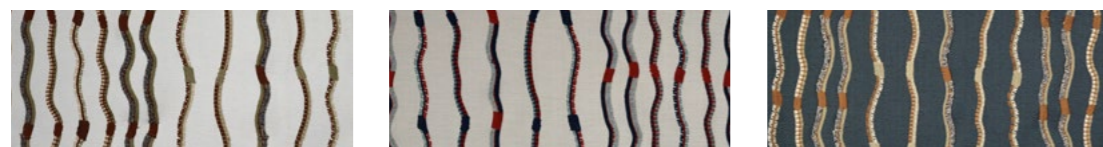
CLAUS L. 140 cm



Col. 01 Natural White T193380001
Col. 02 Parchment T193380002
Col. 03 Cognac T193380003
Col. 04 Terracotta T193380004
Col. 05 Indigo Blue T193380005

COMPOSITION: 52% BCI CO + 39% VI + 9% LI | WEIGHT: 560 g/ml | LIGHTFASTNESS: 4 | MARTINDALE: 70.000 CC | RAPPORT: H1,8 cm | FR: M1 + NFPA 701 + BS5867 PART 2 Under Request. | OEKO-TEX 100 | GOTS.

LIGNE DE VIE L. 135 cm



Col. 01 Automne Naturel T193340001
Col. 02 Brise Marine T193340002
Col. 03 Nuit Bleu T193340003

COMPOSITION: 52% BCI CO + 39% VI + 9% LI (Embroidery: 85% PL + 10% JU + 5% PA) | WEIGHT: 851 g/ml | LIGHTFASTNESS: 4 | MARTINDALE: 30.000 CC | RAPPORT: H43,5 x V39 cm | OEKO-TEX 100 | GOTS.

FELINE L. 140 (use 128 cm)



Col. 01 Antilope Gris T193360001
Col. 02 Vison T193360002
Col. 03 Gris Bleute T193360003

COMPOSITION: 100% PL (Embroidery: 60% PAC + 30% PL + 10% VI) | WEIGHT: 697 g/ml | LIGHTFASTNESS: 4 | MARTINDALE: 40.000 CC | RAPPORT: H43,4 x V59 cm | OEKO-TEX 100 | GOTS.

TOTO L. 140 cm



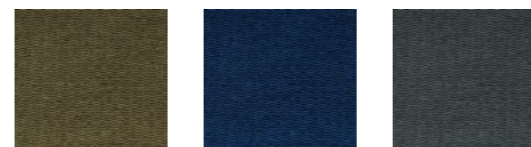
Col. 01 Antilope Gris T193370001
Col. 02 Vison T193370002
Col. 03 Gris Bleute T193370003

COMPOSITION: 100% PL | WEIGHT: 527 g/ml | LIGHTFASTNESS: 4 | MARTINDALE: >100.000 CC | OEKO-TEX 100 | GOTS.

PARTICULIER FR L. 135 cm



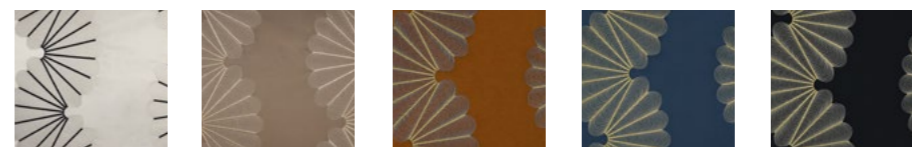
Col. 01 Natural White T193400001
Col. 02 Milky White T193400002
Col. 03 Parchment T193400003
Col. 04 Golden Linen T193400004
Col. 05 Taupe T193400005
Col. 06 Cognac T193400006
Col. 07 Terracotta T193400007



Col. 08 Khaki Green T193400008
Col. 09 Cobalt Blue T193400009
Col. 10 Steel Gray T193400010

COMPOSITION: 59% CO + 41% VI | WEIGHT: 800 g/ml | PILLING: 4/5 | LIGHTFASTNESS: 5 | MARTINDALE: 40.000 CC | FR: BS 5852 SOURCE 0 + EN 1021-1 + NFPA 260 + CAL 117 PASS. BS 5852 Source 1 Under Request. | PFA'S FREE.

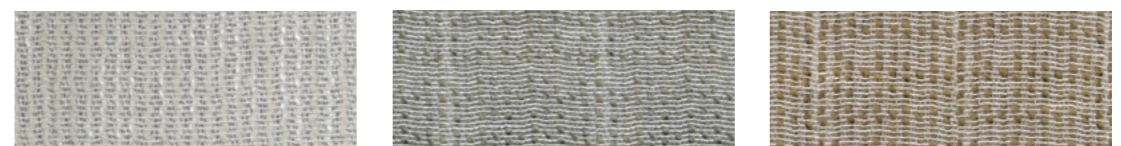
POETIQUE L. 147 (use 135 cm)



Col. 01 Noir sur Blanc T193440001
Col. 02 Brume de Lin T193440002
Col. 03 Cognac T193440003
Col. 04 Or sur Azure T193440004
Col. 05 Or sur Noir T193440005

COMPOSITION: 100% BCI CO (Embroidery: 15% PL + 10% CO + 70% VI + 5% PA) | WEIGHT: 540 g/ml | LIGHTFASTNESS: 4 | MARTINDALE: 45.000 CC | RAPPORT: H45 x V79 cm | OEKO-TEX 100 | GOTS.

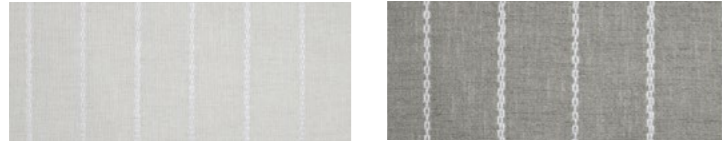
LA SCENE L. 295/300 cm



Col. 01 Natural White T193490001
Col. 02 Bleute Taupe T193490002
Col. 03 Cognac T193490003

COMPOSITION: 35% VI + 56% CO + 10% CA | WEIGHT: 726 g/ml | LIGHTFASTNESS: 5.

LINOR L. 300 cm



Col. 01
Natural White
T193480001

Col. 02
Greige
T193480002

COMPOSITION: 38% PL + 19% CO + 19% PAC + 12% LI + 12% VI | WEIGHT: 660 g/ml | LIGHTFASTNESS: 4/5 | RAPPORT: H20 x V2 cm | OEKO-TEX 100 | REACH Complies.

LA FOLIE WALLPAPER roll 71 x 100 cm (customizable)



LA FOLIE
Col. 01 Natural



LA FOLIE
Col. 02 Cognac

Product Features

	PVC-free		Fire-retardant classification		Nonwoven adhesive		Paste-the-wall technique		Breathable
	Impact-resistant		Outstanding light-fastness		Easy to remove		Eco-friendly		OEKO TEX 100
	UV inks		UV resistance		Latex inks		Solvent inks		

A Special Thank | Agradecimentos:
Escola Artística Soares dos Reis | easr.pt | Rostyslava Hutsul

COLETTE IN/OUTDOOR L. 140 cm



Col. 01
Linen
T193530001

Col. 02
Golden Rod
T193530002

Col. 03
Terracotta
T193530003

Col. 04
Raffia
T193530004

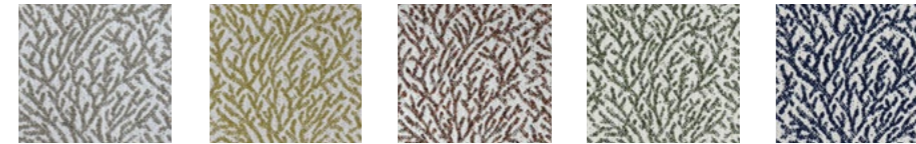
Col. 05
Moss Green
T193530005

Col. 06
Glacier Blue
T193530006

Col. 07
Marine Blue
T193530007

COMPOSITION: 90% PP + 10% PL | WEIGHT: 1000 g/ml | PILLING: 4/5 | LIGHTFASTNESS: 7 | MARTINDALE: 40.000 CC | RAPPORT: H65 x V85 cm | MOLD RESISTANCE | COLOUR FASTNESS TO CHLORINATED: 4/5.

CORALIE IN/OUTDOOR FR L. 140 cm



Col. 01
Linen
T193540001

Col. 01
Golden Rod
T193540002

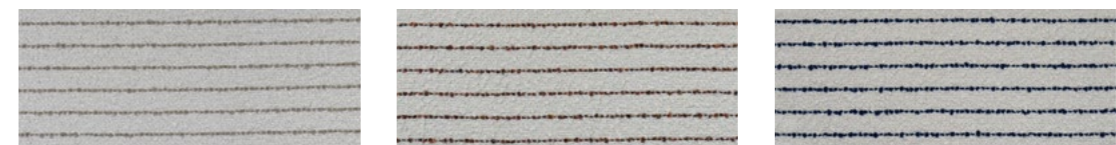
Col. 03
Terracotta
T193540003

Col. 01
Moss Green
T193540004

Col. 05
Marine Blue
T193540005

COMPOSITION: 92% RPP + 8% PL | WEIGHT: 726 g/ml | PILLING: 4/5 | LIGHTFASTNESS: 7/8 | MARTINDALE: 40.000 CC | RAPPORT: H35 x V33.5 cm | FR: BS 5852 SOURCE 0 + EN 1021-1 + CALL 117 + NFPA 260 | WATER REPELLENT | GLOBAL RECYCLED STANDARD | EU ECOLABEL | PFA'S FREE | OEKO-TEX 100. | MORE INFO*

BRISTOL STRIPE IN/OUTDOOR FR L. 140 cm



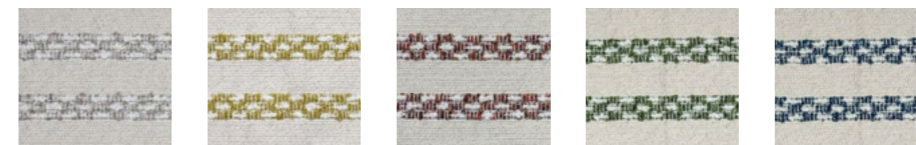
Col. 01
Linen
T193560001

Col. 03
Terracotta
T193560002

Col. 05
Marine Blue
T193560003

COMPOSITION: 92% RPP + 8% PL | WEIGHT: 641 g/ml | PILLING: 4/5 | LIGHTFASTNESS: 7/8 | MARTINDALE: 45.000 CC | RAPPORT: V2 cm | FR: BS 5852 SOURCE 0 + EN 1021-1 + CALL 117 + NFPA 260 | WATER REPELLENT | GLOBAL RECYCLED STANDARD | EU ECOLABEL | PFA'S FREE | OEKO-TEX 100. | MORE INFO*

FLAPPER STRIPE IN/OUTDOOR FR L. 140 cm



Col. 01
Linen
T193500001

Col. 02
Golden Rod
T193500002

Col. 03
Terracotta
T193500003

Col. 04
Moss Green
T193500004

Col. 05
Marine Blue
T193500005

COMPOSITION: 90% RPP + 10% PL | WEIGHT: 840 g/ml | PILLING: 5 | LIGHTFASTNESS: 7 | MARTINDALE: 40.000 CC | RAPPORT: V4,5 cm | FR: BS 5852 SOURCE 0 + EN 1021-1 + CALL 117 + NFPA 260 | WATER REPELLENT | GLOBAL RECYCLED STANDARD | EU ECOLABEL | PFA'S FREE | OEKO-TEX 100. | MORE INFO*

FOXTROT STRIPE IN/OUTDOOR FR L. 140 cm



Col. 01
Linen
T193520001

Col. 02
Golden Rod
T193520002

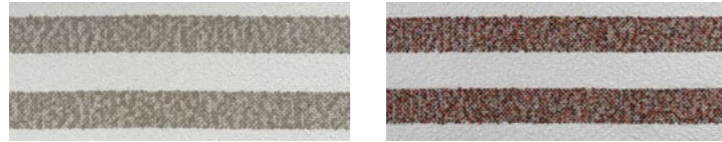
Col. 03
Terracotta
T193520003

Col. 04
Moss Green
T193520004

Col. 05
Marine Blue
T193520005

COMPOSITION: 8% PL + 92% RPP | WEIGHT: 670 g/ml | PILLING: 4 | LIGHTFASTNESS: 7/8 | MARTINDALE: 45.000 CC | RAPPORT: H1 x V6 cm | FR: BS 5852 SOURCE 0 + EN 1021-1 + CALL 117 + NFPA 260 | WATER REPELLENT | GLOBAL RECYCLED STANDARD | EU ECOLABEL | PFA'S FREE | OEKO-TEX 100. | MORE INFO*

JAZZ STRIPE IN/OUTDOOR FR L. 140 cm



Col. 01
Linen
T193510001

Col. 02
Terracotta
T193510002

COMPOSITION: 92% RPP + 8% PL | WEIGHT: 650 g/ml | PILLING: 5 | LIGHTFASTNESS: 7/8 | MARTINDALE: 30.000 CC | RAPPORT: V7,5 cm | FR: BS 5852 SOURCE 0 + EN 1021-1 + CALL 117 + NFPA 260 | WATER REPELLENT | GLOBAL RECYCLED STANDARD | EU ECOLABEL | PFA'S FREE | OEKO-TEX 100. | MORE INFO*

ECRU IN/OUTDOOR FR L. 140 cm



Col. 01
Naturel
T193550001

COMPOSITION: 92% RPP + 8% PL | WEIGHT: 651 g/ml | PILLING: 4 | LIGHTFASTNESS: 7 | MARTINDALE: >50.000 CC | FR: BS 5852 SOURCE 0 + EN 1021-1 + CALL 117 + NFPA 260 | WATER REPELLENT | GLOBAL RECYCLED STANDARD | EU ECOLABEL | PFA'S FREE | OEKO-TEX 100. | MORE INFO*

INDOOR / OUTDOOR Technical info

* Performed Tests: Antibacterial Test STM E 2149-13 | Antiviral Test ISO 18184 | Colour Fastness to Perspiration ISO 105 E04 | Colour Fastness to sea water ISO 105 E02 | Colour Fastness to chlorinated water ISO 105-E03 | Spray Test ISO 4920 | Liquid Repellency | Phenolic Yellowing ISO 105-X18 | Mold Resistance | Bleach cleanable.

<p>Doesn't stain Não mancha No mancha Ne tache pas</p>	<p>Resistent to acids (sweat & urine) Resistente a ácidos (suor & urina) Resistente a los ácidos (sudor & orina) Résistant aux acides (sueur & urine)</p>	<p>Machine washable Lavável à máquina Lavable en máquina Lavable en machine</p>	<p>Dimensional stability Dimensão estável Dimensión estable Dimension stable</p>	<p>High martindale Elevado martindale Alto martindale Martindale élevé</p>
<p>Wear Resistant Resistente ao desgaste Resistente al desgaste Résistant à l'usure</p>	<p>No ironing required Não necessita passar a ferro No necesita planchar Pas de repassage nécessaire</p>	<p>Doesn't lose color when washed Não perde cor na lavagem No pierde color en el lavado Ne perd pas de couleur au lavage</p>	<p>Dope dyed Tinto em pasta Teñido en pasta Teintée en pâte</p>	<p>Resistant to mold Resistente ao bolor Resistente al moho Résistant à la moisissure</p>
<p>Ecological and 100% recyclable Ecológico 100% reciclável Ecológico 100% reciclable Écologique 100% recyclable</p>	<p>Non allergenic and antibacterial Antialérgico e antibacteriano Antialérgico y antibacteriano Antiallergique et antibactérien</p>	<p>Anti mite Antiácaros Anti-ácaros Anti-acariens</p>	<p>Cool in summer, warm in winter Fresco no Verão quente no Inverno Fresco en verano cálido en invierno Frais en été chaud en hiver</p>	<p>Resistant to sunlight Resistente à luz solar Resistente a la luz solar Résistance à la lumière</p>

Participation Participação

ADICO | www.adico.pt
Pags. outdoor chairs & side tables 49 | 51 | 53.

BRABBU | www.brabbu.com

Pags. armchair 19.

CASTRO LIGHTING | www.castrolighting.com

Pags. table lamp 5 | 13 | 15 | 36 | 37 | floor lamp 33.

DUISTT | duistt.com

Pags. sofa & armchair 05 | 08 | 09 | 10 | 11 | 12 | 13 | 15 | 36 | 36 side table 13 | 15 | 19 | 23 | 36 | 37 | 45 armchair 16 | 17 | 20 | 23 | 25 | 27 | 29 | 31 | 32 | 33 | chairs 41 | 42 | 43.

KOKET | www.bykoket.com

Pags. armchair 45.

MUNNA | www.munnadesign.com

Pags. 34 | 35 | 37 | 38 | 39.

Place to visit Local a visitar

PALACETE SILVA MONTEIRO | <https://www.vinhoverde.pt/pt/experiencias/>

WALLDECO
Wallpapers & Wallcoverings



ALDECO



COMPETE
2030

PORTUGAL
2030

Cofinanciado pela
União Europeia

www.aldeco.pt

Production and Design by Aldeco - Interior Fabrics | Photography by Gonçalo Gomes
No part of this publication may be reproduced without prior permission Aldeco - Interior Fabrics

Aldeco World

Where to find us



HEAD OFFICE:

Rua da Saibreira 265/269
Parque Industrial de Grijó
4415-538 Grijó
Vila Nova de Gaia
Portugal
Tel.: (+351) 227 537 230
(national landline call)
Fax.: (+351) 227 531 062
E-mail: aldecogeral@aldeco.pt

PORTO SHOWROOM

Galerias Douro Foz
Rua do Ouro, 508
4150-553 Porto
Portugal
Tel.: (+351) 226 079 410
(national landline call)
Fax: (+351) 226 079 419
E-mail: aldecoporto@aldeco.pt

LISBOA SHOWROOM

Rua Luís de Camões, 106-C
Alcântara
1300-360 Lisboa
Portugal
Tel.: (+351) 213 951 540
(national landline call)
Fax: (+351) 213 951 541
E-mail: aldecolisboa@aldeco.pt

ALGARVE SHOWROOM:

Caminho da Cascalheira LJ4
8125-018 Quarteira
Portugal
Tel.: (+351) 289 323 245
(national landline call)
Fax: (+351) 289 323 246
E-mail: aldecoalgarve@aldeco.pt

MADRID SHOWROOM:

Barrio de Salamanca
Calle de Lagasca, 132
28006 Madrid
Tel.: (+34) 914 879 563
(national spanish landline call)
Spain
E-mail: abitaredealdeco@aldeco.pt



WWW.ALDECO.PT