

S

ALDECO

*Authenticity  
Collection*



*Authenticity  
Collection*

WWW.ALDECO.PT



In a restless pursuit of our essence and positivity, we seek comfort in technology, creativity and focus with resilience and flexibility on what's essential, to discover inventive ways to move forward.

We explore new horizons, aiming to feel the Dream with our fingertips, in a search for protection, safety and well-being. The essential and the authentic take center stage, as does the desire for wonder with a clear and conscientious approach.

Let us share origins and connect with our own humanity, recreating narratives of the past in modern tales, with rich embroideries and exquisite jacquards in a perfect symbiosis of technology at the service of ecology.

Let us rediscover our own essence through the Authentic.



*Susana Dias*

Brand & Creative Director  
Susana Dias

En una búsqueda incesante de lo positivo y de nuestra esencia, buscamos la comodidad en la tecnología, la creatividad y nos enfocamos en lo esencial con resiliencia y flexibilidad para descubrir formas ingeniosas de avanzar.

Exploramos nuevos horizontes con el deseo de tocar el Sueño con la punta de los dedos, en busca de protección, seguridad y bienestar. Lo esencial y lo auténtico son los protagonistas, así como el deseo de lo maravilloso con un enfoque claro y consciente.

Compartimos orígenes y nos conectamos con nuestra propia humanidad, recreando narrativas del pasado en cuentos modernos, con ricos bordados y exquisitos jacquards en una perfecta simbiosis de tecnología al servicio de la ecología.

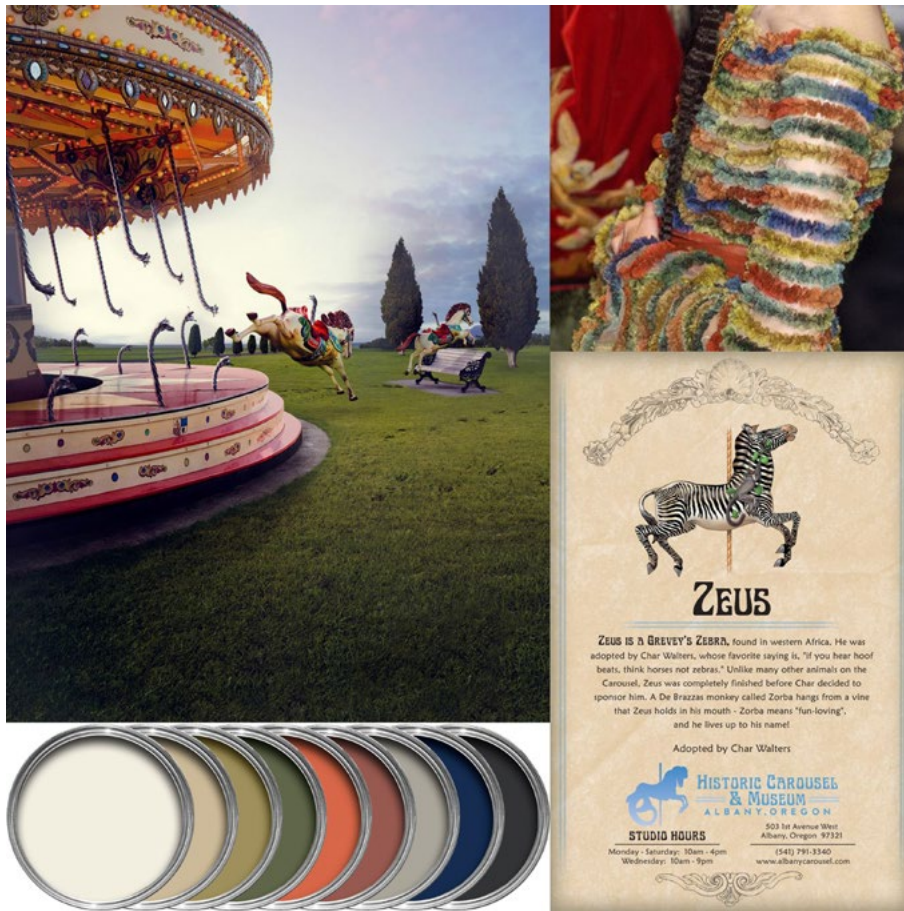
Así, redescubrimos nuestra propia esencia a través de lo Auténtico.

*Dans une poursuite incessante de notre essence et de notre positivité, nous recherchons le confort dans la technologie et la créativité. Nous nous concentrons avec résilience et flexibilité sur ce qui est essentiel afin de découvrir des moyens inventifs pour aller de l'avant.*

*Nous explorons de nouveaux horizons en visant à ressentir le Rêve du bout des doigts, dans une recherche de protection, de sécurité et de bien-être. L'essentiel et l'authentique sont à l'honneur ainsi que le désir d'émerveillement dans une approche claire et consciencieuse.*

*Partageons nos origines et connectons-nous avec notre propre humanité en recréant des récits du passé dans des contes modernes, avec de riches broderies et des jacquards exquis en symbiose parfaite avec la technologie et au service de l'écologie.*

*Redécouvrons notre propre essence à travers l'Authentique.*



Numa busca incessante pelo positivo e pela nossa essência, procuramos conforto na tecnologia, na criatividade e focamos no essencial com resiliência e flexibilidade para descobrirmos formas inventivas de seguir em frente.

Exploramos novos horizontes com desejo de tocar o Sonho com a ponta dos nossos dedos, numa busca de proteção, segurança e bem-estar. O essencial e o autêntico ocupam o centro do palco, assim como o desejo do maravilhoso com uma abordagem clara e consciente.

Partilhamos origens e conectamos-nos com a nossa própria humanidade, recriando narrativas do passado em contos modernos, com ricos bordados e jacquards requintados em perfeita simbiose da tecnologia ao serviço da ecologia.

Assim, reencontramos a nossa própria essência através do Autêntico.

"If you hear hoof beats,  
think horses not zebras."

*Char Walters*



[1]  
**ZEUS**  
Col. 03 Terracotta

## *Zeus*

Zeus, also known as the Imperial Zebra is a Grévy that was discovered in West Africa.

Zeus is the star of Albany Carousel & Museum's carousel and was adopted by Char Walters, whose favorite saying was: "If you hear hooves, wait for horses, not zebras." Char called his new zebra "Zeus" because its proudly held head makes it look majestic.

Zorba is the playful demeanor monkey hanging from a vine that Zeus is holding in his mouth.

Nature is the star of this embroidered fabric, where the imposing meets the beautiful and where the animals play in a dreamlike way, as if they were part of a carousel, dancing and celebrating nature.

Zeus embroidery combines diverse embroidery techniques present in each of its elements, bringing a unique and rich look to this satin, as well as a carousel.



PAULO CARVALHO  
PHOTOGRAPHY

Imagem para selecção  
Substituir por ficheiro final tratado  
[www.paulocarvalho.photo](http://www.paulocarvalho.photo)  
© Paulo Carvalho



Imagem para  
Substituir por T. deiro final tratado  
www.paulocarva.com.br  
© Paulo Carva



Imagem para selecção  
Substituir por ficheiro final tratado  
[www.paulocarvalho.photo](http://www.paulocarvalho.photo)  
© Paulo Carvalho

[1]  
**ZEUS**  
Col. 03 Terracotta

## *Privé Mélange FR*

Privé Mélange Velvet FR is a silky jacquard velvet. It is a yarn dyed fabric with high shiny pile.

This voluminous fabric with very discreet and elegant mixed colors allows for better combinations in projects and decoration.

OEKO-TEX certified and with more than 45,000 Martindale cycles abrasion resistance, this wonderfully rich velvet is presented in a palette of 7 colors simply blended.

[1]  
**PRIVÉ MELANGE VELVET FR**  
Col. 07 Orange Terre

[2]  
**CAROUSEL CORD**  
Col. 05 Terracotta

[3]  
**FONDANT CETIN CS**  
Col. 06 Black









[1]  
**CAROUSEL CORD**  
Col. 05 Terracotta





Imagem em seleção  
Substituir por ficheiro final tratado  
www.paulocarvalho.photo  
© Paulo Carvalho

[1]  
**ZEUS**  
Col. 01 Baby's Breath

[2]  
**ZEUS**  
Col. 03 Terracotta

[3]  
**ZEUS**  
Col. 02 Taupe

[4]  
**CAROUSEL CORD**  
Col. 03 Oil Green





## *Lumière Jacquard Velvet*

Carded jacquard velvet with a detailed geometric design. The color card present in each color is enriched by the twisted effect of a bright yarn that contrasts with the rest of the design, making it simply irresistible.

[1]  
**LUMIÈRE JACQUARD VELVET**  
Col. 05 Autumn Gold

[1]  
**ZEUS**  
Col. 03 Terracotta

[2]  
**ZEUS**  
Col. 02 Taupe

[3]  
**CAROUSEL CORD**  
Col. 03 Oil Green

[4]  
**CAROUSEL CORD**  
Col. 05 Terracotta

[5]  
**CAROUSEL CORD**  
Col. 01 Baby's Breath

Paulo Carvalho

[6]  
**MIRABILIS**  
Col. 02 Blue Dream

[7]  
**PRODOTTO**  
Col. 06 Golden Farm





PAULO CARVALHO  
PHOTOGRAPHER

Imagem em edição  
Sem tratamento  
www.paulocarvalho.com.br  
© Paulo Carvalho

[6]  
**CAROUSEL CORD**  
Col. 03 Oil Green

The essential and the authentic take  
center stage, as does the desire for  
wonder (...)



Imagem para selecção  
Substituir por ficheiro final tratado  
[www.paulocarvalho.photo](http://www.paulocarvalho.photo)  
© Paulo Carvalho





ra...  
o...  
carvalho.pho...  
alho





Imagem para ser substituída  
Substituir por título e final tratado  
[www.paulocarvalho.photo](http://www.paulocarvalho.photo)  
© Paulo Carvalho



[2] **LUMIÈRE JACQUARD VELVET**  
Col. 06 Terre Écarlate

[3] **CAROUSEL CORD**  
Col. 05 Terracotta

[4] **SUCCESSO VELVET**  
Col. 24 Bluish Black



Imagem para substituição  
Substituir por foto de maior qualidade  
[www.paulocarvalho.pt](http://www.paulocarvalho.pt)  
© Paulo Carvalho



## *Daydreaming WLB*

This curtain fabric has a textured transparency with natural look that resembles a very light and soft linen. An elegant sheer with 320 cm width that has a raw beauty inherent to linen, with a cloudy soft touch. The way it falls is especially tempting.

The greatness of this fabric is that it looks very natural, even though it is a polyester and linen blend, which makes it more resistant to washing and more straight when washed and ironed. We opted for these 2 bright colors to represent the natural shades of linen. This lovely fabric comes with Eco Lead Band.

## *Chill FR*

Chill FR is our proposal for greatness and presence in drapery. This 300 cm wide fabric is very heavy, bodied, strongly structured and with a rich natural texture. Piece dyed in 31 magnificent colors with amazing blended effect, suited for drapery.

[1]  
**CHILL FR**  
Col. 03 Pale Stone

[2]  
**DAYDREAMING WLB**  
Col. 02 Natural White

[3]  
**LUMIÈRE JACQUARD VELVET**  
Col. 06 Terre Écarlate



PAULO CARVALHO  
PHOTOGRAPHER

Imagem selecionada  
Substitua  
www.zeus.com.br  
© Zeus

[1]  
**ZEUS**  
Col. 03 Terracotta

[2]  
**CAROUSEL CORD**  
Col. 05 Terracotta





Imagem para seleção  
Substituir por ficheiro do  
[www.paulocarvalho.pt](http://www.paulocarvalho.pt)  
© Paulo Carvalho

[1]  
**PRIVÉ MELANGE VELVET FR**  
Col. 07 Orange Terre

[2]  
**CAROUSEL CORD**  
Col. 05 Terracotta

[3]  
**FONDANT CETIN CS**  
Col. 06 Black



PAULO CARVALHO  
PHOTOGRAPHER

Imagem para selecção  
Substituir por ficheiro final tratado  
[www.paulocarvalho.photo](http://www.paulocarvalho.photo)  
© Paulo Carvalho





Imagem para seleção  
Substituir por ficheiro final tratado  
[www.paulocarvalho.photo](http://www.paulocarvalho.photo)  
© Paulo Carvalho

[1]  
**DREAMSTIME WLB**  
Col. 03 Linen



Imagem para selecção  
Substituir por ficheiro final tratado  
[www.paulocarvalho.photo](http://www.paulocarvalho.photo)  
© Paulo Carvalho

*Wild Thing*

Wild Thing is a jacquard fabric with textured yarn with a bouclé effect and a wild look. Adding a new range of natural and trendy colors to this magnificent upholstery fabric, they are rich and the background is contrasting with the fur to emphasize the chevron effect.

[2]  
**WILD THING**  
Col. 02 White Cotton  
[3]  
**SUCCESSO VELVET**  
Col. 24 Bluish Black



Imagem para Seleção  
Substituir por ficheiro final tratado  
[www.paulocarvalho.photo](http://www.paulocarvalho.photo)  
© Paulo Carvalho

[1]  
**DREAMTIME WLB**  
Col. 03 Linen

[2]  
**CAROUSEL CORD**  
Col. 03 Oil Green

## *Carousel Cord*

Rich and elegant jacquard fabric that represents the simple and unique construction of the strings in a twisted, clean and organized way. This element is present on the rods of the carousels and is represented in a very simple and architectural way. Each color has 3 different yarn colors, which makes it easy to mix and match with the rest of the decor.

## *Dreamstime WLB*

Dreamstime is a 320 cm wide sheer, perfect for a richer textured response for every project. It is considered a heavier response for a sheer curtain, considering it is almost 700g/ 1m and it gives a magnificent and heavy fall. It is already available with Eco Lead Band for extra heaviness.



Imagem para selecção  
Realizada por richeiro final tratado  
[www.paulocarvalho.photo](http://www.paulocarvalho.photo)  
© Paulo Carvalho



[1]  
**CAROUSEL CORD**  
Col. 06 Linen Blue

[2]  
**VELLUTINO FR**  
Col. 13 Riverside Blue



material por esse e seu uso  
substitua por outro se não tratado  
www.paulocarvalho.photo  
© Paulo Carvalho

[1]  
**INHAUS PRINTED VELVET VIRALOFF**  
Col. 03 Leafy Blue Green

[2]  
**SIÈGE COTTON VELVET**  
Col. 0642 Navy Blue

## *InHaus Printed Velvet*

InHAUS is a fabric with a strong inspiration on the Bauhaus legacy, as a transition from the previous collection Invicta 2020.

Following our environmental awareness, this high pile cotton velvet has been developed with an inherent treatment with Polygiene ViralOff, that is imbibed within the fibre production and reduces 99% of viruses within 2 hours.

Urban geometric architecture deconstructed and assembled as this artistic movement's aesthetics, takes us back to a warm place where the harmony of geometric and organic shapes come together as a southern picture of an Urban Geometry Architecture. This soft jacquard weave plain velvet is available in 3 colours and can be FR treated.

It is possible to order with COEX FR certificate, however it cannot be simultaneously with antiviral treatment.



## Hill FR

Hill FR is a very natural smooth transparency for curtain with FR yarn, It has a natural linen look and a lovely blended effect. Hill FR is a double width natural look transparency curtain resembling a handmade burlap. With a smooth transparency and with FR yarn and with a linen. We emphasize the natural look along the whole collection.



Imagem para selecção  
Sujeito do ficheiro final tratado  
[www.paulocarvalho.photo](http://www.paulocarvalho.photo)  
© Paulo Carvalho

[3]  
**HILL FR**  
Col. 03 White Aqua



02 02 02 02 02



Imagem para selecção  
Substitua por ficheiro final tratado  
[www.paulocarvalho.photo](http://www.paulocarvalho.photo)  
© Paulo Carvalho

[1]  
**TATAMI WLB**  
Col. 02 White Cream

*We yearn for safety, security and well-being,  
discarding the superfluous but longing to  
grab the Dream with  
our fingertips.*

*Tatami WLB*

Tatami is a very special transparency curtain fabric with a with blended effect that resembles the Japanese tatami, with a raw and natural look. This is also a very lightweight curtain and it's presented in 4 special colours easy to complement with all sorts of decoration. This fabric is available with Eco Lead Band included for more versatility.

A tatami is a type of mat used as a flooring material in traditional Japanese style rooms. They are usually covered with woven soft rush (igusa) straw. The core is traditionally made from rice straw.



Imagem para selecção  
Substituir por ficheiro final tratado  
[www.paulocarvalho.photo](http://www.paulocarvalho.photo)  
© Paulo Carvalho





[1]  
**TATAMI WLB**  
Col. 02 White Cream

[2]  
**ZEUS**  
Col. 02 Taupe

[3]  
**CAROUSEL CORD**  
Col. 01 Baby's Breath

[4]  
**PRIVÉ MELANGE VELVET FR**  
Col. 08 Olive Vert



[5]  
**PRIVÉ MELANGE VELVET FR**  
Col. 01 Champagne

[6]  
**TULU FR**  
Col. 03 Oxford Tan

[7]  
**LUMIÈRE JACQUARD VELVET**  
Col. 03 Privilège Green

[8]  
**SIÈGE COTTON VELVET**  
Col. 0865 Aquarelle



[1]  
**ZEUS**  
Col. 02 Taupe

[2]  
**CAROUSEL CORD**  
Col. 01 Baby's Breath

[3]  
**PRIVÉ MELANGE VELVET FR**  
Col. 08 Olive Vert

[4]  
**PRIVÉ MELANGE VELVET FR**  
Col. 01 Champagne

[5]  
**CAROUSEL CORD**  
Col. 02 White Taupe

[6]  
**ZEUS**  
Col. 01 Baby's Breath

[7]  
**LUMIÈRE JACQUARD VELVET**  
Col. 03 Privilège Green





Imagem para seleção  
Substituir por ficheiro final tratado  
[www.paulocarvalho.pt](http://www.paulocarvalho.pt)  
© Paulo Carvalho

[1]  
**DAYDREAMING WLB**  
Col. 02 Natural White



PAULO CARVALHO  
PHOTOGRAPHER

Imagem para selecção  
Substituí por ficheiro final tratado  
[www.paulocarvalho.photo](http://www.paulocarvalho.photo)  
© Paulo Carvalho

[2]  
**CAROUSEL CORD**  
Col. 05 Terracotta



[1]  
**RECYCLING**  
07 Parchment Beige

[2]  
**HILL FR**  
04 Golden Earth

[3]  
**LIFE VELVET**  
Col. 02 Timber Taupe

PAULO CARVALHO  
PHOTOGRAPHER

Imagem pa  
stituir p  
[www.paulo](http://www.paulo)  
© Paulo Ca

ra sele  
or fich  
carvalho.photo  
rvalho



# Recycling

With Recycling we focus on creating a future beyond tomorrow. Recycling uses yarn produced from pre consumer and post consumer waste, this prevents wastage of potentially useful materials and resources along with many other benefits. These recycled materials follow a complete, verified chain of custody from input to final product.

In order to provide a traceability throughout the entire production process to prove the level of recycled material, following the GRS (GLOBAL RECYCLED STANDARDS) criteria.

- CHEMICALS: Recycling prevents air pollution.
- ENERGY USAGE: Energy usage will be optimised and controlled in order to improve annually.
- WATER POLLUTION: Recycling reduces water pollution by utilising waste that otherwise ends up in landfills or in the ocean.
- GAS EMISSIONS: The process of recycling reduces also emissions of greenhouse gases.
- SOCIAL: Strong social responsibility policy such as no child labor and no unnecessary harm by chemicals for workers.
- ENVIRONMENT: Strong environmental protections in place such as waste discharge management of dangerous substances and noise emissions.

The GLOBAL RECYCLED STANDARD (GRS) is one of the most important organizations that internationally promote responsible and sustainable development in the textile sector. GRS aims to encourage the reduction of resource consumption (virgin raw materials, water and energy) and increased the quality of recycled products. Double width textured and heavy fabric made with recycled yarn suitable for bedding and drapery.





Imagem para selecção  
Substituir por ficheiro final tratado  
[www.paulocarvalho.photo](http://www.paulocarvalho.photo)  
© Paulo Carvalho



Imagem para fins de divulgação  
Substitua pelo nome do produto  
[www.paulasharon.com.br](http://www.paulasharon.com.br)  
© Paulo Carvalho

[1]  
**HILL FR**  
04 Golden Earth

[2]  
**LIFE VELVET**  
Col. 02 Timber Taupe



Imagem para seleccao  
Substituir por ficheiro .tif  
[www.paulocarvalho.photography](http://www.paulocarvalho.photography)  
© Paulo Carvalho



PAULO CARVALHO  
PHOTOGRAPHER

Imagem para selecção  
Substituir por ficheiro final tratado  
[www.paulocarvalho.photo](http://www.paulocarvalho.photo)  
© Paulo Carvalho

[2]  
**SEALIFE VELVET**  
Col. 04 Bright Coral

## *Life Velvet*

When Nature gathers all the conditions of sunlight, temperature, moist... It creates LIFE.

LIFE VELVET is our tribute to the Mother Nature and the magnificent ability to perform this absolute miracle: LIFE. Life is printed in the same double width velvet base of Seclife.

## *Sealife Velvet*

Sealife Velvet is one of the stars of this collection. We represent life itself and the concern of the environmental issues of today and the future. The corals are very sensitive and they bless us with the most beautiful and amazing colors when the oceans are clean, but if the environment is polluted, the corals die and lose their beautiful colours. In this printed heavy bodied velvet, we offer a very natural background and it's double width making it very versatile, perfect for upholstery, drapery and bedding.



Imagem para selecção  
Substituir por ficheiro final tratado  
[www.paulocarvalho.photo](http://www.paulocarvalho.photo)  
© Paulo Carvalho



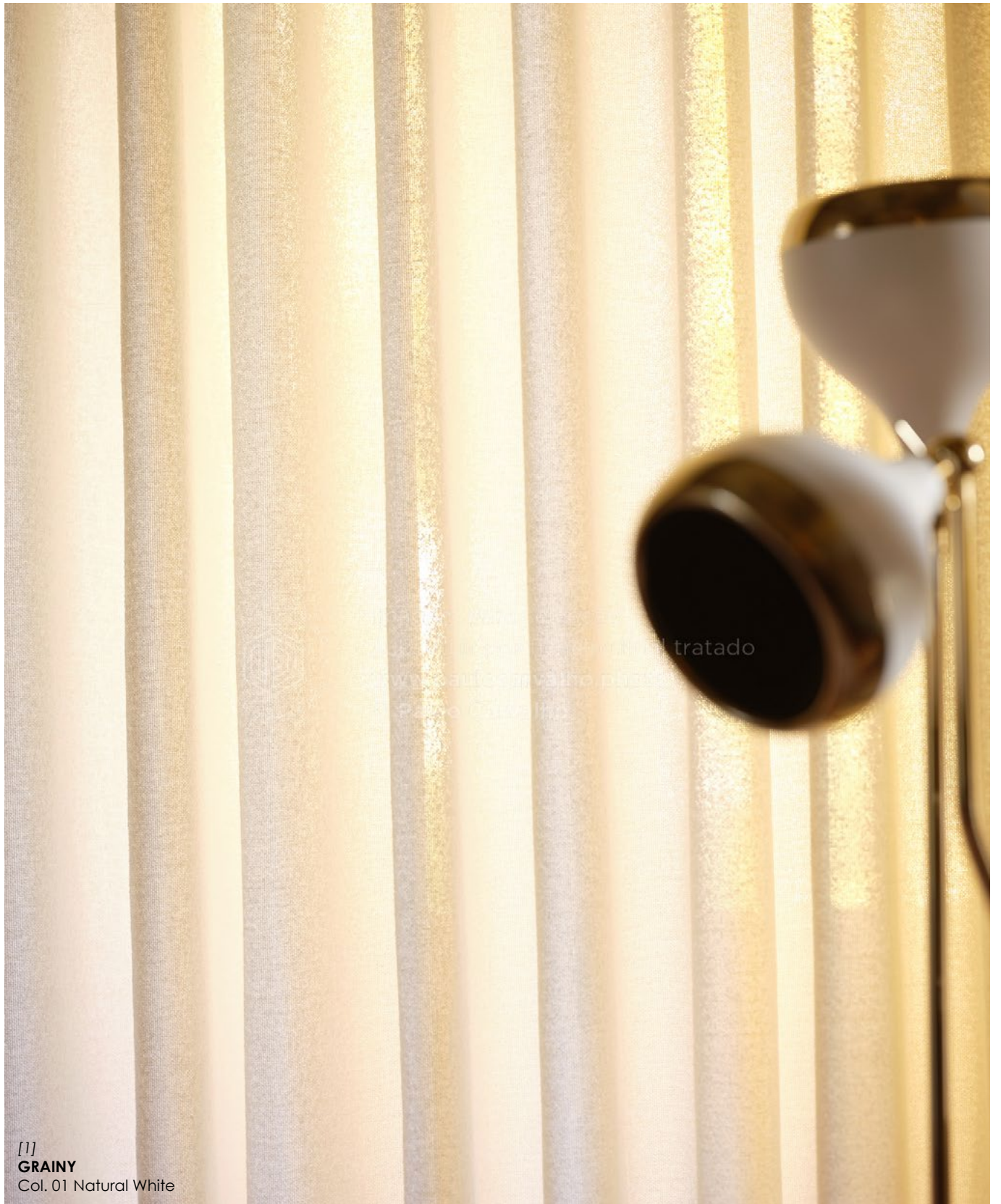
Imagem: Paulo Carvalho  
Substituição: Paulo Carvalho  
www.paulocarvalho.com.br  
© Paulo Carvalho

[1]  
**SEALIFE VELVET**  
Col. 04 Bright Coral

[2]  
**GRAINY**  
Col. 01 Natural White

## *Grainy*

Grainy is a fabric for curtain and it is special because of its rustic texture and heaviness that gives it a great fall. Looking closely we, can see the magnificent blended effect with different colors. The natural look is present along the whole collection.



[1]  
**GRAINY**  
Col. 01 Natural White



Imagem para eleiçoes  
Substituir no ficheiro final a traco  
[www.paulocarvalho.photography](http://www.paulocarvalho.photography)  
© Paulo Carvalho

[1]  
**WILD THING**  
Col. 07 Terracota

[2]  
**RISE WLB**  
Col. 07 Oyster Gray

## *Rise WLB*

Rise WLB is a lovely curtain with 295 to 300 width, that resembles a net with the main veins vertically orientated. This sheer is surprisingly smooth and the strings gives the texture a natural and elegant brightness, thanks to the calendered finish. We present this sheer in 23 colors, all with Eco Lead Band for more ecological versatility.



Imagem para seleção  
Substituir por ficheiro final tratado  
[www.paulocarvalho.photo](http://www.paulocarvalho.photo)  
© Paulo Carvalho



imagem para telas  
substituir por ficheiro original tratado  
[www.paulocastalho.com](http://www.paulocastalho.com)  
© Paulo Castalho

[1]  
**WILD THING**  
Col. 07 Terracota

[2]  
**CAROUSEL CORD**  
Col. 06 Linen Blue

## *Cordvelvet*

Cordvelvet is a curtain fabric that is also heavy weighted and has a great fall and feel, almost as a suede or peach skin touch. This curtain is 297 cm wide and has a lovely smooth touch, almost as a corduroy. It has a small strié effect and it's suited for drapery. Presented in 32 natural, trendy and bold colours.



Imagem para selecção  
Disponível por ficheiro final tratado  
[www.paulocarvalho.photo](http://www.paulocarvalho.photo)  
© Paulo Carvalho

[3]  
**CORDVELVET**  
Col. 06 Dove Gray



Imagem para seleção

Substitua por nome do produto

[www.paulocarvalho.pro](http://www.paulocarvalho.pro)

© Paulo Carvalho

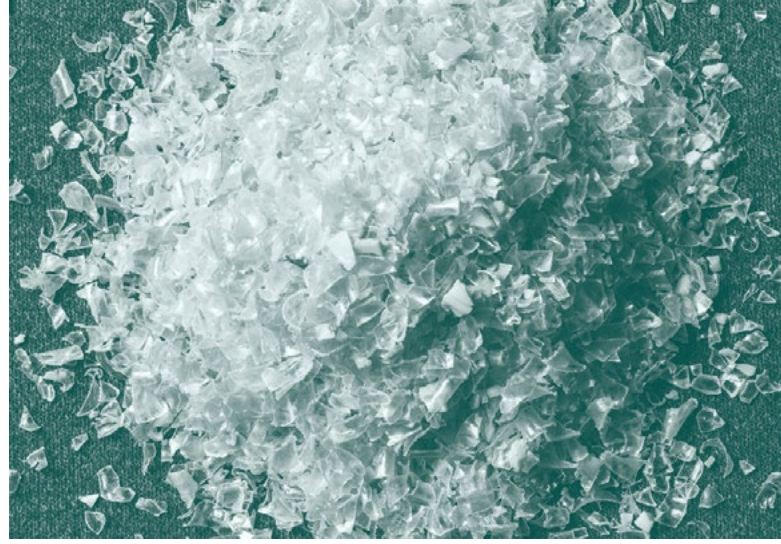
We ventured into the discovery of textures through rich embroideries, exquisite jacquards, while also innovating, activating and freeing our imagination with elegant motifs full of possibilities.

*Susana Dias*



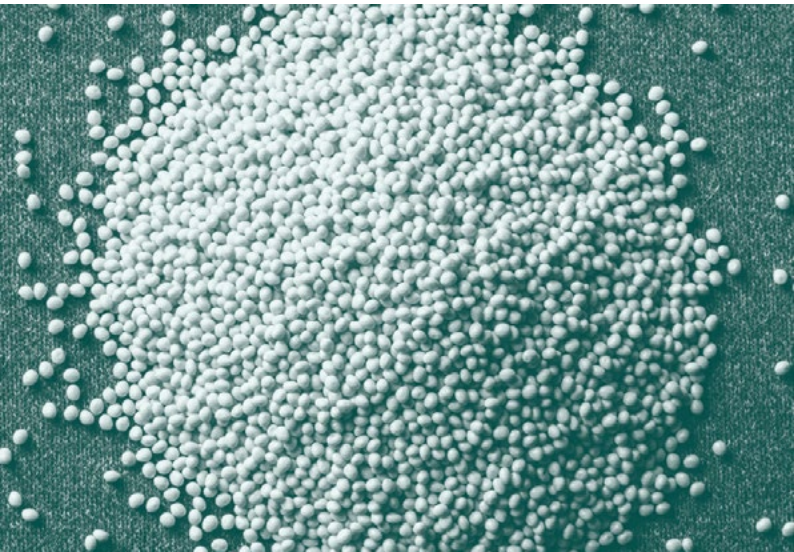
**OEKO-TEX®**  
CONFIDENCE IN TEXTILES  
**STANDARD 100**  
20200K0217 AITEX





## *Rescue Easy Clean FR*

Rescue is an innovative fabric, made from 100 recycled material of plastic bottles reclaimed from the sea. This fabric is the perfect response to our commitment to heal the future and make this world a better place: It's made of 100 recycled material, doesn't generate any waste in it's production, is extremely long lasting, anti stain protection and it's also very comfortable.







# IN/ ☀ -UTDOOR

[1]  
**MAISON IN/OUTDOOR**  
Col. 01 Natural White

[2]  
**MAISON IN/OUTDOOR**  
Col. 06 Marine Blue

[3]  
**LIBERTÉ IN/OUTDOOR**  
Col. 04 Riverside Blue

[4]  
**BELLE TWEED IN/OUTDOOR**  
Col. 02 Linen Riverside

[5]  
**MAISON IN/OUTDOOR**  
Col. 05 Riverside Blue

[6]  
**LIBERTÉ IN/OUTDOOR**  
Col. 05 Marine Blue

[1]  
**MAISON IN/OUTDOOR**  
Col. 01 Natural White

[2]  
**MAISON IN/OUTDOOR**  
Col. 05 Riverside Blue

[3]  
**LIBERTÉ IN/OUTDOOR**  
Col. 05 Marine Blue

[4]  
**MAISON IN/OUTDOOR**  
Col. 02 Linen

[5]  
**BELLE TWEED IN/OUTDOOR**  
Col. 04 Marine Green

[6]  
**MAISON IN/OUTDOOR**  
Col. 06 Marine Blue

[7]  
**BELLE TWEED IN/OUTDOOR**  
Col. 02 Linen Riverside

[8]  
**LIBERTÉ IN/OUTDOOR**  
Col. 04 Riverside Blue







Imagem para selecção  
Substituir por ficheiro final tratado  
[www.paulocarvalho.photo](http://www.paulocarvalho.photo)  
© Paulo Carvalho



[1]  
**BELLE TWEED IN/OUTDOOR**  
Col. 04 Marine Green



[2]  
**MAISON IN/OUTDOOR**  
Col. 06 Marine Blue

[3]  
**MAISON IN/OUTDOOR**  
Col. 01 Natural White



[1]  
**MAISON IN/OUTDOOR**  
Col. 05 Riverside Blue

[2]  
**MAISON IN/OUTDOOR**  
Col. 01 Natural White

[3]  
**MAISON IN/OUTDOOR**  
Col. 06 Marine Blue

[4]  
**LIBERTÉ IN/OUTDOOR**  
Col. 04 Riverside Blue

[5]  
**LIBERTÉ IN/OUTDOOR**  
Col. 05 Marine Blue

[6]  
**MAISON IN/OUTDOOR**  
Col. 02 Linen

[7]  
**BELLE TWEED IN/OUTDOOR**  
Col. 02 Linen Riverside

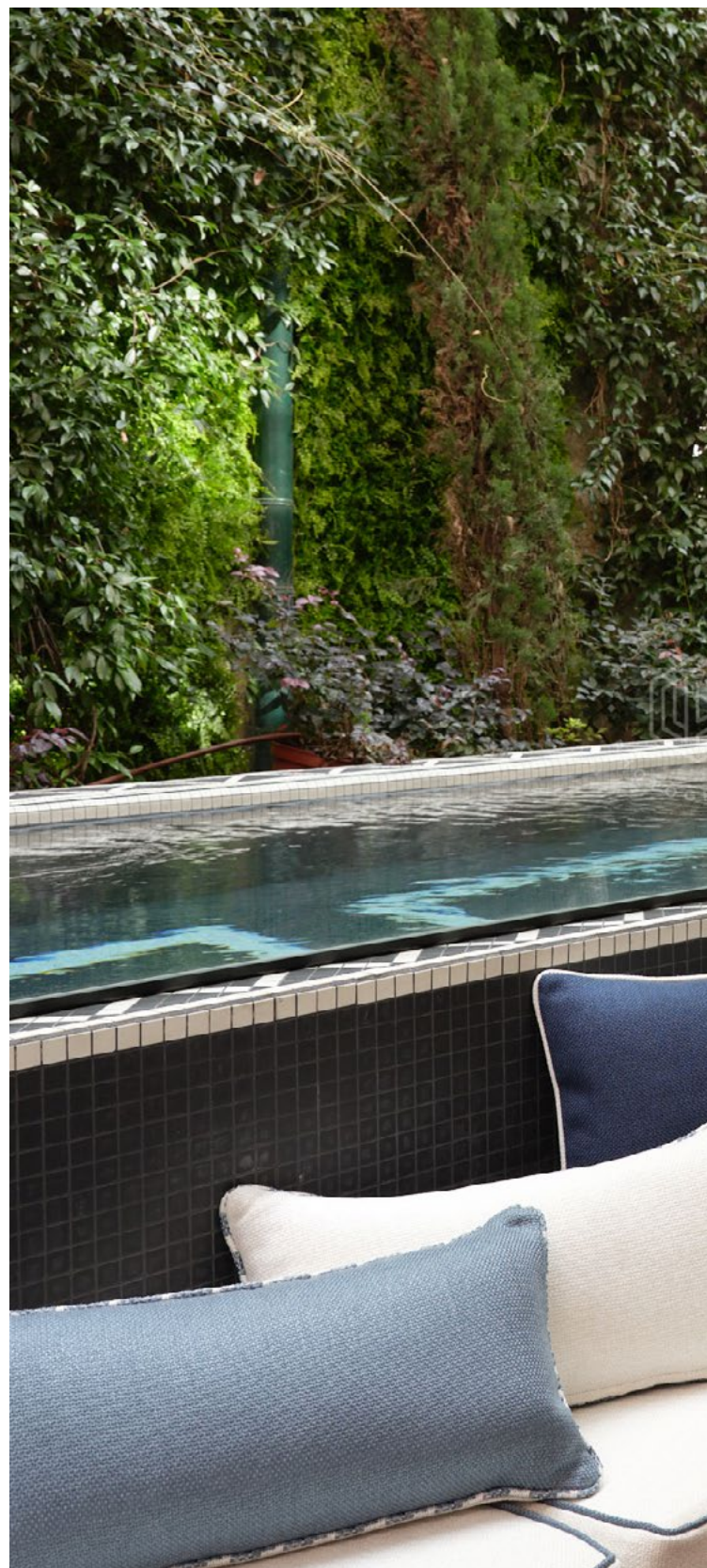




imagem para referência  
Substituir por ficheiro final tratado  
www.paulocarneirophoto.com  
© Paulo Carneiro



ALDECO

*Authenticity  
Collection*

CAROUSEL CORD L. 140 cm



Col. 01  
Baby's Breath  
T192110001



Col. 02  
White Taupe  
T192110002



Col. 03  
Oil Green  
T192110003



Col. 04  
Golden Olive  
T192110004



Col. 05  
Terracotta  
T192110005



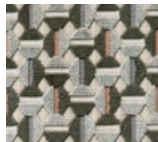
Col. 06  
Linen Blue  
T192110006

COMPOSITION: 77% VI + 23% PA | WEIGHT: 543 g/ml | MARTINDALE: 40 000 CC | RAPPORT: H8,5 x V3 cm

LUMIÈRE JACQUARD VELVET L. 138/140 cm



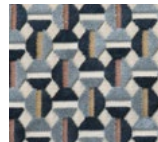
Col. 01  
Natural Greige  
T192130001



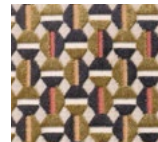
Col. 02  
Catwalk Taupe  
T192130002



Col. 03  
Privilege Green  
T192130003



Col. 04  
Riverside Gold Blue  
T192130004



Col. 05  
Autumn Gold  
T192130005



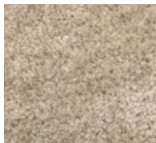
Col. 06  
Terre Écarlate  
T192130006



Col. 07  
Anthracite Gold  
T192130007

COMPOSITION: 67% VI + 33% PL | WEIGHT: 914 g/ml | MARTINDALE: 40 000 CC | RAPPORT: H4,5 x V5 cm

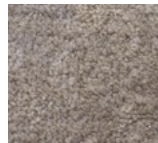
PRIVÉ MELANGE VELVET FR L. 140 cm



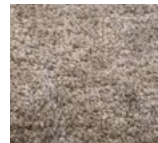
Col. 01  
Champagne  
T192120001



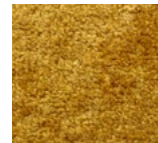
Col. 02  
Beige Royal  
T192120002



Col. 03  
Belle Greige  
T192120003



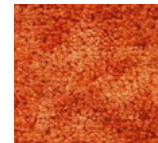
Col. 04  
Visón  
T192120004



Col. 05  
Curry Riche  
T192120005



Col. 06  
Saumon Doré  
T192120006



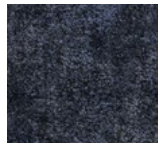
Col. 07  
Orange Terre  
T192120007



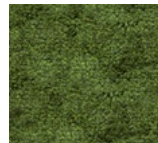
Col. 08  
Olive Vert  
T192120008



Col. 09  
Vert de Bleu  
T192120009



Col. 10  
Bleu Royal  
T192120010



Col. 11  
Mousse Vert  
T192120011



Col. 12  
Paris Gris  
T192120012

COMPOSITION: 73% PAN + 27% PL | WEIGHT: 1020 g/ml | MARTINDALE: 45 000 CC | FR: B55852 SOURCE 0 + EN1021-Part 1 + CAL TB 117 + NFPA 260

ZEUS L. 130 cm (usable)



Col. 01  
Baby's Breath  
T192100001



Col. 02  
Taupe  
T192100002



Col. 03  
Terracotta  
T192100003

COMPOSITION: 100% CO / EMBROIDERY VI + PL | WEIGHT: 613 g/ml | MARTINDALE: 30 000 CC | RAPPORT: H63,5 x V78 cm

INHAUS PRINTED VELVET VIRALOFF L. 140 cm



Col. 01  
Toast & Coffee  
T192010101



Col. 02  
Spiced Up  
T192010102



Col. 03  
Leafy Blue Green  
T192010103

COMPOSITION: 100% CO/BASE: 93% CO + 7% MD | WEIGHT: 630 g/ml | MARTINDALE: 50 000 CC | RAPPORT: H140 x V76 cm | VIRALOFF® TREATMENT.

LIFE VELVET L. 290 cm



Col. 01  
Creamy Light  
T192070001



Col. 02  
Timber Taupe  
T192070002



Col. 03  
Vert de Terre  
T192070003

COMPOSITION: 100%PL | WEIGHT: 1230 g/ml | MARTINDALE: 150 000 CC | RAPPORT: H61 x V49 cm | FR: M1 Treatment available upon request.

SEALIFE VELVET L. 290 cm



Col. 01  
Aqua Mist  
T192060001



Col. 02  
Pacific Sunset  
T192060002



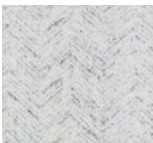
Col. 03  
Deep Reef  
T192060003



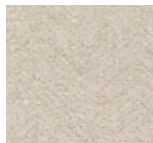
Col. 04  
Bright Coral  
T192060004

COMPOSITION: 100%PL | WEIGHT: 1230g/ml | MARTINDALE: 150 000 CC | RAPPORT: H57 x V46 cm | FR: M1 Treatment available upon request.

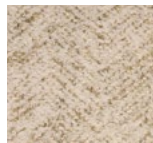
WILD THING L. 140 cm



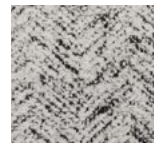
Col. 01  
Wild White  
T191690001



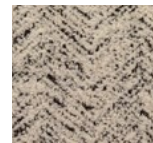
Col. 02  
White Cotton  
T191690002



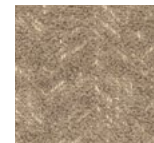
Col. 03  
White Sand  
T191690003



Col. 04  
White on Black  
T191690004



Col. 05  
Creamy Shadow  
T191690005



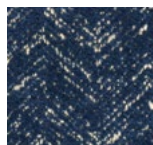
Col. 06  
Linen  
T191690006



Col. 07  
Terracotta  
T191690007



Col. 08  
Oil Green  
T191690008



Col. 09  
Indigo  
T191690009

COMPOSITION: 65% CO + 16% PL + 13% VI + 6% LI | WEIGHT: 880 g/ml | MARTINDALE: >40 000 CC | FR: BS 5852 Source 1 Treatment available upon request.

CHILL FR L. 300 cm



Col. 01  
Pure White  
T191920001



Col. 02  
White Cream  
T191920002



Col. 03  
Pale Stone  
T191920003



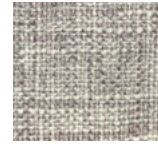
Col. 04  
Silver Gray  
T191920004



Col. 05  
Abalone  
T191920005



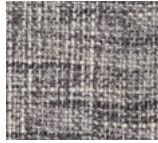
Col. 06  
Breeze  
T191920006



Col. 07  
Mystic Gray  
T191920007



Col. 08  
Slate  
T191920008



Col. 09  
Graphite  
T191920009



Col. 10  
Elephant Gray  
T191920010



Col. 11  
Misted Taupe  
T191920011



Col. 12  
French Clay  
T191920012



Col. 13  
Light Taupe  
T191920013



Col. 14  
Canvas  
T191920014



Col. 15  
Wheat  
T191920015



Col. 16  
Honey  
T191920016



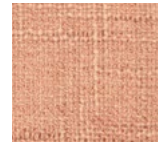
Col. 17  
Corn  
T191920017



Col. 18  
Linen  
T191920018



Col. 19  
Chocolate Mix  
T191920019



Col. 20  
Blush  
T191920020



Col. 21  
Coral Reef  
T191920021



Col. 22  
Amber  
T191920022



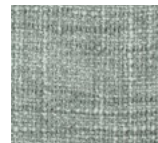
Col. 23  
Gold  
T191920023



Col. 24  
Chartreuse  
T191920024



Col. 25  
Aqua  
T191920025



Col. 26  
Eau de Nille  
T191920026



Col. 27  
Blue Haze  
T191920027



Col. 28  
Ice Blue  
T191920028



Col. 29  
Harbor Fog  
T191920029



Col. 30  
Baltic Blue  
T191920030



Col. 31  
Denim  
T191920031

COMPOSITION: 100% PL | WEIGHT: 1200 g/ml | MARTINDALE: 30.000 CC (Only suitable for Bedding and Drapery) | FR: DIN 4102-B1 + M1.

DAYDREAMING WLB L. 320 cm



Col. 01  
Pure White  
T191990001



Col. 02  
Natural White  
T191990002

COMPOSITION: 60%PL + 40%LI | WEIGHT: 435 g/ml

CORDVELVET L. 295/297 cm

						
Col. 01 Bright White T191960001	Col. 02 Pearl Gray T191960002	Col. 03 Silver Gray T191960003	Col. 04 Black T191960004	Col. 05 White Cream T191960005	Col. 06 Dove Gray T191960006	Col. 07 Angora Gray T191960007
						
Col. 08 Shadow Gray T191960008	Col. 09 Dark Mirage Gray T191960009	Col. 10 Oyster Gray T191960010	Col. 11 Casual Greige T191960011	Col. 12 Aquarelle T191960012	Col. 13 Milkshake T191960013	Col. 14 Parchment Beige T191960014
						
Col. 15 Natural Linen T191960015	Col. 16 Pink Nude T191960016	Col. 17 Grape Rose T191960017	Col. 18 Lavender Mist T191960018	Col. 19 Coral Reef T191960019	Col. 20 Hot Cherry T191960020	Col. 21 Burgundy T191960021
						
Col. 22 Burnt Orange T191960022	Col. 23 Apricot Rose T191960023	Col. 24 Banana Yellow T191960024	Col. 25 Marigold T191960025	Col. 26 Olive Green T191960026	Col. 27 Moss Green T191960027	Col. 28 Dragonfly Blue T191960028
						
Col. 29 Blue Heaven T191960029	Col. 30 Ice Blue T191960030	Col. 31 Blue Stone T191960031	Col. 32 Dark Ink Blue T191960032			

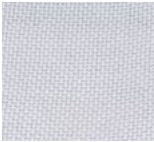
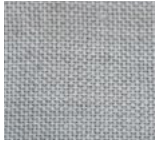



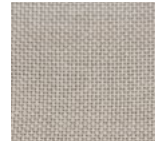
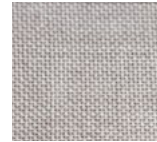


















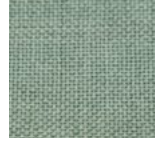
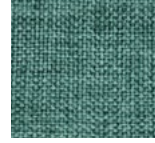



COMPOSITION: 100% PL | WEIGHT: 600 g/ml | FR: FMVSS 302 | MARTINDALE: 16.000 CC (Only suitable for Bedding and Drapery).

DREAMSTIME WLB L. 320 cm

				
Col. 01 Pure White T191970001	Col. 02 Champagne T191970002	Col. 03 Linen T191970003	Col. 04 Light Silver T191970004	Col. 05 Light Stone T191970005

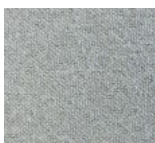
COMPOSITION: 100% PL | WEIGHT: 696 g/ml

RECYCLING L. 295/300 cm

							
Col. 01 Bright White T191950001	Col. 02 Angora Gray T191950002	Col. 03 Stone Gray T191950003	Col. 04 Black T191950004	Col. 05 White Cream T191950005	Col. 06 Oyster Linen T191950006	Col. 07 Parchment Beige T191950007	
							
Col. 08 Greige T191950008	Col. 09 Agate Gray T191950009	Col. 10 Natural Linen T191950010	Col. 11 Milkshake T191950011	Col. 12 Nomad Beige T191950012	Col. 13 Casual Greige T191950013	Col. 14 Sesame Beige T191950014	
							
Col. 15 Mocha T191950015	Col. 16 Chocolate T191950016	Col. 17 Mellow Mauve T191950017	Col. 18 Cloudy Rose T191950018	Col. 19 Coral Reef T191950019	Col. 20 Brick Dust T191950020	Col. 21 Cadmium Rose T191950021	
							
Col. 22 Amber Brown T191950022	Col. 23 Mustard T191950023	Col. 24 Raffia T191950024	Col. 25 Olive Gray T191950025	Col. 26 Aqua T191950026	Col. 27 Dragonfly Blue T191950027	Col. 28 Blue Heaven T191950028	
							
Col. 29 Denim Blue T191950029	Col. 30 Blue Indigo T191950030						

COMPOSITION: 45% PL+55% RECYCLED PL | WEIGHT: 1092 g/ml

GRAINY L. 310 cm

					
Col. 01 Natural White T192030001	Col. 02 White Blue T192030002	Col. 03 Linen T192030003	Col. 04 White Gray T192030004	Col. 05 Greige T192030005	Col. 06 Blue Linen T192030006

COMPOSITION: 57%PL + 43%LI | WEIGHT: 977 g/ml

HILL FR L. 300 cm



Col. 01  
Off White  
T191930001



Col. 02  
Beige  
T191930002



Col. 03  
White Aqua  
T191930003



Col. 04  
Golden Earth  
T191930004



Col. 05  
Moonstone  
T191930005



Col. 06  
Misted Taupe  
T191930006



Col. 07  
Petrol Blue  
T191930007



Col. 08  
Navy Blue  
T191930008



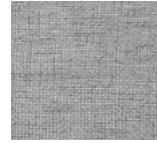
Col. 09  
Canyon Sunset  
T191930009



Col. 10  
Linen Blush  
T191930010



Col. 11  
White Baltic  
T191930011



Col. 12  
Steel Gray  
T191930012



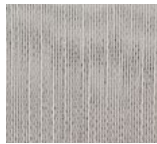
Col. 13  
Charcoal  
T191930013

COMPOSITION: 100% PL FR | WEIGHT: 507 g/ml | FR: M1 + DIN 4102-B1 + EN 13773 + IMO7.

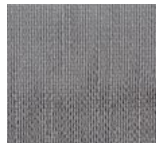
RISE WLB L. 295/300 cm



Col. 01  
Pure White  
T191940001



Col. 02  
Light Silver  
T191940002



Col. 03  
Slate Gray  
T191940003



Col. 04  
Shadow Gray  
T191940004



Col. 05  
Black  
T191940005



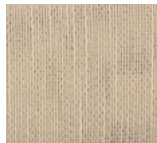
Col. 06  
Dove Gray  
T191940006



Col. 07  
Oyster Gray  
T191940007



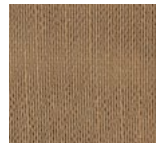
Col. 08  
Dark Olive Gray  
T191940008



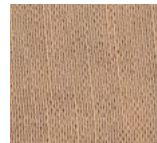
Col. 09  
Milkshake  
T191940009



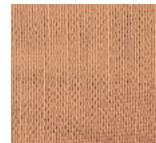
Col. 10  
Parchment Beige  
T191940010



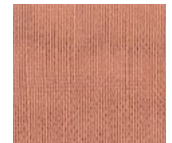
Col. 11  
Nomad Beige  
T191940011



Col. 12  
Cloudy Rose  
T191940012



Col. 13  
Pink Nude  
T191940013



Col. 14  
Ash Rose  
T191940014



Col. 15  
Amber Brow  
T191940015



Col. 16  
Honey Mustard  
T191940016



Col. 17  
Casual Greige  
T191940017



Col. 18  
Sesame Greige  
T191940018



Col. 19  
Park Avenue Green  
T191940019



Col. 20  
Blue Heaven  
T191940020



Col. 21  
Ice Blue  
T191940021



Col. 22  
Steel Gray  
T191940022



Col. 23  
Prussian Blue  
T191940023

COMPOSITION: 100% PL | WEIGHT: 543 g/ml

AIR L. 300 cm

						
Col. 01 Charcoal T192090001	Col. 02 Ash T192090002	Col. 03 Smoke T192090003	Col. 04 Mist T192090004	Col. 05 Pure T192090005	Col. 06 Snow T192090006	Col. 07 Swan T192090007
						
Col. 08 Pearl T192090008	Col. 09 Cream T192090009	Col. 10 Ecu T192090010	Col. 11 Wheat T192090011	Col. 12 Fossil T192090012	Col. 13 Chinchilla T192090013	Col. 14 Earth T192090014
						
Col. 15 Sand T192090015	Col. 16 Wool T192090016	Col. 17 Flax T192090017	Col. 18 Lagoon T192090018	Col. 19 Mineral T192090019	Col. 20 Spa T192090020	Col. 21 Scuba T192090021
						
Col. 22 Teal T192090022	Col. 23 Spruce T192090023	Col. 24 Marine T192090024	Col. 25 Dove T192090025	Col. 26 Parma T192090026	Col. 27 Blossom T192090027	

COMPOSITION: 69% PL + 31% LI | WEIGHT: 330 g/ml | OEKO-TEX

MINIMALISM FR L. 310 cm

						
Col. 01 Winter T192080001	Col. 02 Cream T192080002	Col. 03 Raffia T192080003	Col. 04 Linen T192080004	Col. 05 Feather T192080005	Col. 06 Dune T192080006	Col. 07 Mouse T192080007
						
Col. 08 Shark T192080008	Col. 09 Griffin T192080009	Col. 10 Elephant T192080010				

COMPOSITION: 71% PL+29% CO | WEIGHT: 672 g/ml | FR: FMVSS 302

## RESCUE EASY CLEAN FR

L. 140 cm



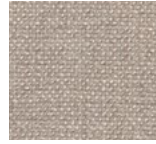
Col. 01  
Cotton White  
T192020001



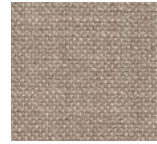
Col. 02  
Cloud White  
T192020002



Col. 03  
Linen  
T192020003



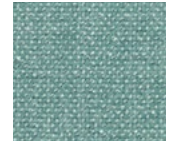
Col. 04  
Dark Greige  
T192020004



Col. 05  
Mocca  
T192020005



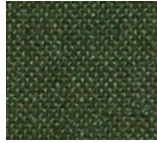
Col. 06  
Pastel Green  
T192020006



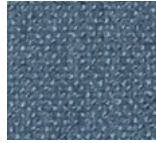
Col. 07  
Aqua Blue  
T192020007



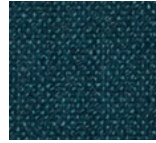
Col. 08  
Black Forest  
T192020008



Col. 09  
Algae  
T192020009



Col. 10  
Denim Blue  
T192020010



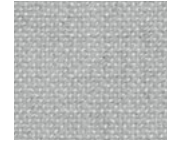
Col. 11  
Blue Jeans  
T192020011



Col. 12  
Marine Blue  
T192020012



Col. 13  
Pearl Gray  
T192020013



Col. 14  
Silver Gray  
T192020014



Col. 15  
Truffle Brown  
T192020015



Col. 16  
Dark Chocolat  
T192020016



Col. 17  
Terracotta  
T192020017



Col. 18  
Argile Rose  
T192020018



Col. 19  
Toast Nude  
T192020019



Col. 20  
Rise Yellow  
T192020020

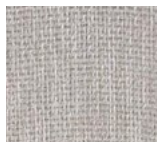
COMPOSITION: 100% RECYCLED PL | WEIGHT: 760 g/ml | MARTINDALE: >100 000 CC | FR: BS5852 Source 0 + EN1021-Part 1 + CAL TB 117 + NFPA 260.

## TATAMI WLB

L. 320 cm



Col. 01  
Natural White  
T191980001



Col. 02  
White Cream  
T191980002



Col. 03  
Light Dove  
T191980003

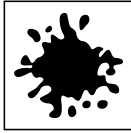


Col. 04  
Light Stone  
T191980004

COMPOSITION: 100% PL | WEIGHT: 442 g/ml



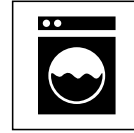
Imagem para selecção  
Substituir por ficheiro final tratado  
[www.paulocarvalho.photo](http://www.paulocarvalho.photo)  
© Paulo Carvalho



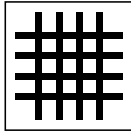
Doesn't stain  
 Não mancha  
 No mancha  
 Ne tache pas



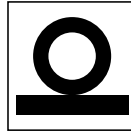
Resistant to acids (sweat & urine)  
 Resistente a ácidos (suor & urina)  
 Resistente a los ácidos (sudor & orina)  
 Résistant aux acides (sueur & urine)



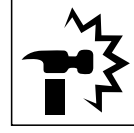
Machine washable  
 Lavável à máquina  
 Lavable en máquina  
 Lavable en machine



Dimensional stability  
 Dimensão estável  
 Dimensión estable  
 Dimension stable



High martindale  
 Elevado martindale  
 Alto martindale  
 Martindale élevé



Wear Resistant  
 Resistente ao desgaste  
 Resistente al desgaste  
 Résistant à l'usure



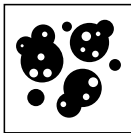
No ironing required  
 Não necessita passar a ferro  
 No necesita planchar  
 Pas de repassage nécessaire



Doesn't lose color when washed  
 Não perde cor na lavagem  
 No pierde color en el lavado  
 Maintien des couleurs au lavage



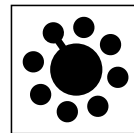
Dope dyed  
 Tingido em pasta  
 Teñido en pasta  
 Teintée en pâte



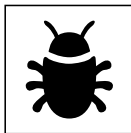
Resistant to mold  
 Resistente ao bolor  
 Resistente al moho  
 Résistant à la moisissure



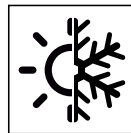
Ecological and 100% recycable  
 Ecológico 100% reciclável  
 Ecológico 100% reciclable  
 Écologique 100% recyclable



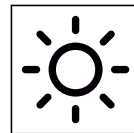
Non allergenic and antibacterial  
 Antialérgico e antibacteriano  
 Antialérgico y antibacteriano  
 Antiallergique et antibactérien



Anti mite  
 Antiácaros  
 Anti-ácaros  
 Anti-acariens



Cool in summer, warm in winter  
 Fresco no Verão quente no Inverno  
 Fresco en verano cálido en invierno  
 Frais en été chaud en hiver



Resistant to sunlight  
 Resistente à luz solar  
 Resistente a la luz solar  
 Résistance à la lumière

MAISON IN/OUTDOOR L. 140 cm



Col. 01  
Natural White  
T192160001



Col. 02  
Linen  
T192160002



Col. 03  
Coral Gable  
T192160003



Col. 04  
Light Gray  
T192160004



Col. 05  
Riverside Blue  
T192160005



Col. 06  
Marine Blue  
T192160006



Col. 07  
Dark Anthracite  
T192160007

COMPOSITION: 100% PP | WEIGHT: 760 g/ml | MARTINDALE: 35 000 CC | FR: BS 5853 Source 1 + TB 117 Treatment available upon request.

BELLE TWEED IN/OUTDOOR L. 140 cm



Col. 01  
White Greige  
T192150001



Col. 02  
Linen Riverside  
T192150002



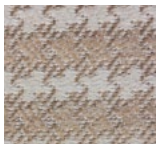
Col. 03  
Marine Coral  
T192150003



Col. 04  
Marine Green  
T192150004

COMPOSITION: 80% PP + 20% PL | WEIGHT: 850 g/ml | MARTINDALE: >30 000 CC | FR: BS 5853 Source 1 + CALL TB 117 Treatment available upon request.

LIBERTÉ IN/OUTDOOR L. 140 cm



Col. 01  
White Linen  
T192140001



Col. 02  
White Gray  
T192140002



Col. 03  
Coral Gable  
T192140003



Col. 04  
Riverside Blue  
T192140004



Col. 05  
Marine Blue  
T192140005



Col. 06  
White Anthracite  
T192140006

COMPOSITION: 80% PP + 20% PL | WEIGHT: 840 g/ml | MARTINDALE: >30 000 CC | RAPPORT: H2 x V4 cm | FR: BS 5853 Source 1 + CALL TB 117 Treatment available upon request.

TERRASSE IN/OUTDOOR L. 140 cm



Col. 01  
White Linen  
T192170001



Col. 02  
White Gray  
T192170002



Col. 03  
Linen Greige  
T192170003



Col. 04  
Marine Blue  
T192170004



Col. 05  
White Anthracite  
T192170005

COMPOSITION: 80% PP + 20% PL | WEIGHT: 790 g/ml | MARTINDALE: >30 000 CC | RAPPORT: H4,5 x V9 cm | FR: BS 5853 Source 1 + CALL TB 117 Treatment available upon request.

ON WEAVING L. 140 cm

Col. 01  
Gray Oyster  
T191820001

Col. 02  
Gray Stone  
T191820002

Col. 03  
Terracota  
T191820003

Col. 04  
Taupe  
T191820004

Col. 05  
Jadeite  
T191820005

Col. 06  
Green Moss  
T191820006

Col. 06  
Green Moss  
T191820006

COMPOSITION: 100% PP | WEIGHT: 760 g/ml | MARTINDALE: 35 000 CC | LIGHTFASTNESS: 7 | FR: BS 5853 Source 1 + TB 117 Treatment available upon request.

# Design Team

## Equipa de Design



# Participation Participação

**BRABBU** | [www.brabbu.com](http://www.brabbu.com)  
**DELIGHTFULL** | [www.delightfull.eu](http://www.delightfull.eu)  
**ESSENTIAL HOME** | [essentialhome.eu](http://essentialhome.eu)  
**PORTO ORIENTE** | [www.portooriente.pt](http://www.portooriente.pt)  
**TRASTES E CONTRASTES** | [www.trastesecontrastes.com](http://www.trastesecontrastes.com)

# Places to visit Locais a visitar

**JARDIM ZOOLOGICO LISBOA** | [www.zoo.pt](http://www.zoo.pt)  
**TOREL PALACE PORTO HOTEL** | [www.torelpalaceporto.com](http://www.torelpalaceporto.com)  
**PALACETE CAMARINHA** |



[www.aldeco.pt](http://www.aldeco.pt)

Production and Design by Aldeco - Interior Fabrics | Photography by Paulo Carvalho  
No part of this publication may be reproduced without prior permission Aldeco - Interior Fabrics

Aldeco World  
Where to find us

*Welcome to*

**ALDECO**

*Turning Dreams into Fabrics since 1993*



**HEAD OFFICE:**

Rua da Saibreira 265/269  
Parque Industrial de Grijó  
4415-538 Grijó  
Vila Nova de Gaia  
Portugal  
Tel.: (+351) 227 537 230  
Fax.: (+351) 227 531 062  
E-mail: [aldecogeral@aldeco.pt](mailto:aldecogeral@aldeco.pt)

**LISBOA SHOWROOM**

Restelo Business Center  
Av. Ilha da Madeira, 35-K-3ºB  
1400-376-Lisboa  
Portugal  
Tel.: (+351) 213 951 540  
Fax: (+351) 213 951 541  
E-mail: [aldecolisboa@aldeco.pt](mailto:aldecolisboa@aldeco.pt)

**MADRID SHOWROOM:**

Barrio de Salamanca  
Calle de Lagasca, 132  
28006 Madrid  
Tel.: (+34) 914 879 563  
Spain  
E-mail: [abitaredealdeco@aldeco.pt](mailto:abitaredealdeco@aldeco.pt)

**PORTO SHOWROOM**

Galerias Douro Foz  
Rua do Ouro, 508  
4150-553 Porto  
Portugal  
Tel.: (+351) 226 079 410  
Fax: (+351) 226 079 419  
E-mail: [aldecoporto@aldeco.pt](mailto:aldecoporto@aldeco.pt)

**ALGARVE SHOWROOM:**

Av. Vilamoura XXI,  
Ed. Portal de Vilamoura,  
Bloco B, r/c, Lj. A  
8125-406 Quarteira  
Portugal  
Tel.: (+351) 289 323 245  
Fax: (+351) 289 323 246  
E-mail: [aldecoalgarve@aldeco.pt](mailto:aldecoalgarve@aldeco.pt)

**PARIS SHOWROOM**

Rue du Mail, 20  
75002 Paris  
France  
Tel.: (+33) 142 36 97 00  
E-mail: [aldecogeral@aldeco.pt](mailto:aldecogeral@aldeco.pt)





WWW.ALDECO.PT